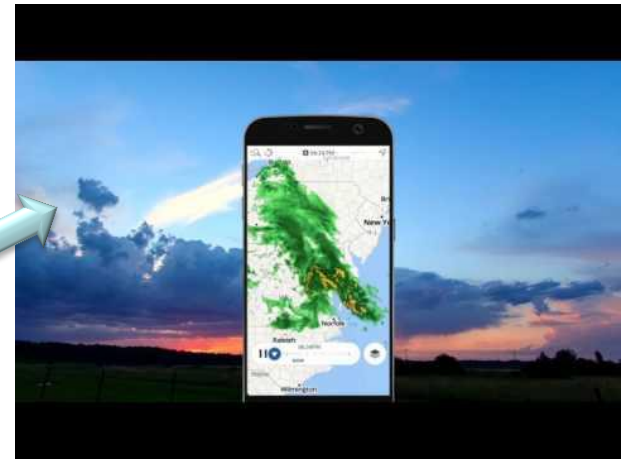
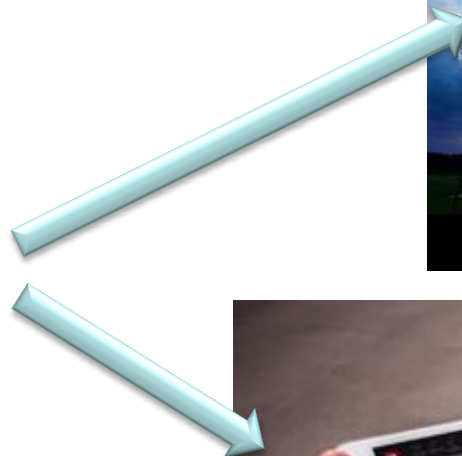
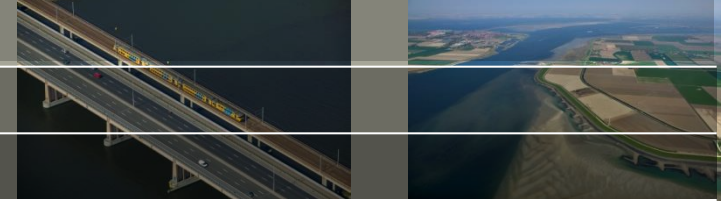


Display Spatial FEWS Data on the Web

Can we display 2D FEWS data in a web environment?



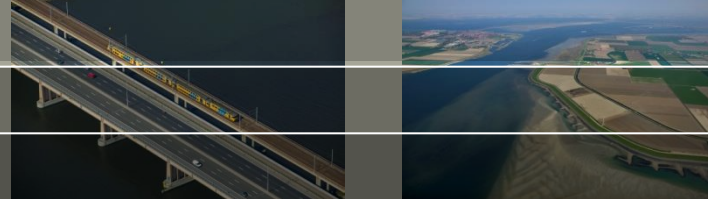
Challenges



Limited development costs...

- Performance
 - Smooth animation of 2D data
 - Both fine resolution as well as large domains
- Styling
 - Rectangular, Curvilinear and Unstructured grids
 - Vectors, Contour lines
- Flexibility
 - Use custom front-end
 - Connect to multiple data layers
 - Applicable to different hardware solutions (laptop, tablet, smart phone)

Technical solutions



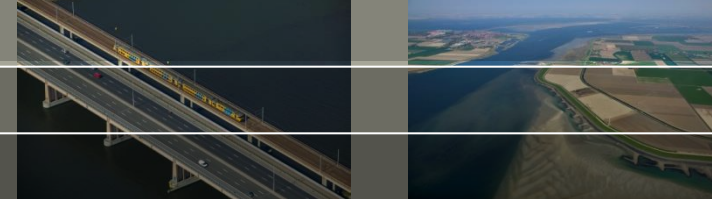
Different technical solutions available to display spatial data on the web:

- pre-generate figures (.png, jpeg) (FEWS Report Module, scripting)
- Services: WMS(T), WMTS(T)
- pre-generate Video or GeoTiff

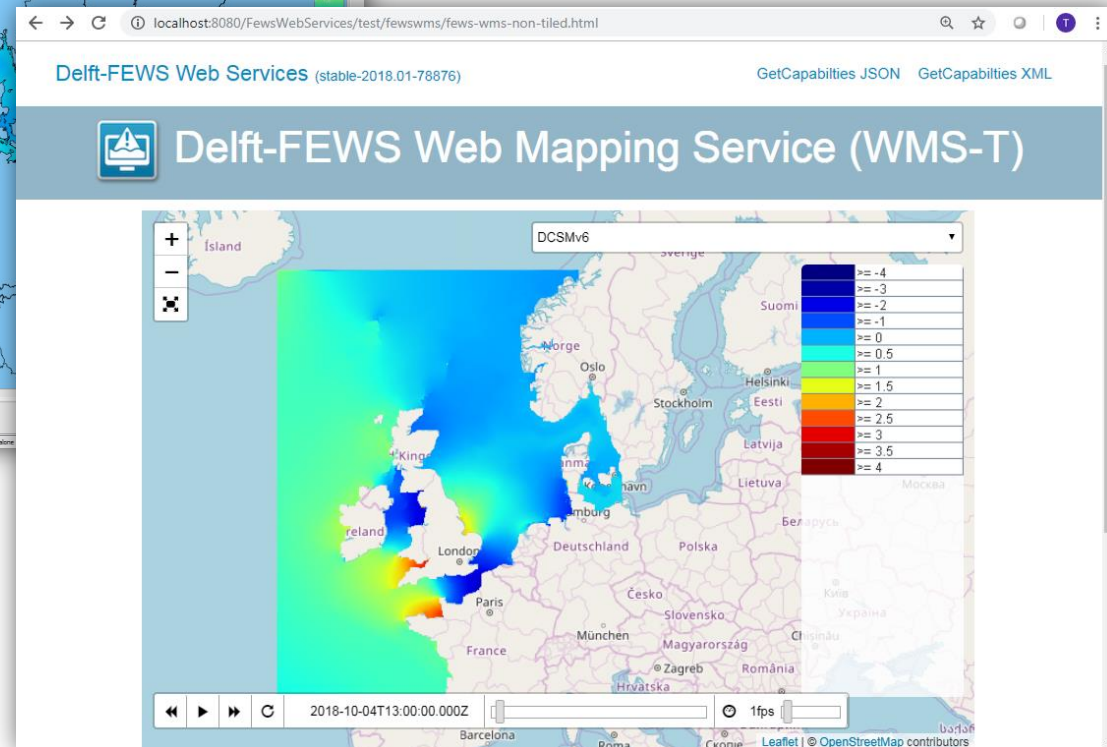
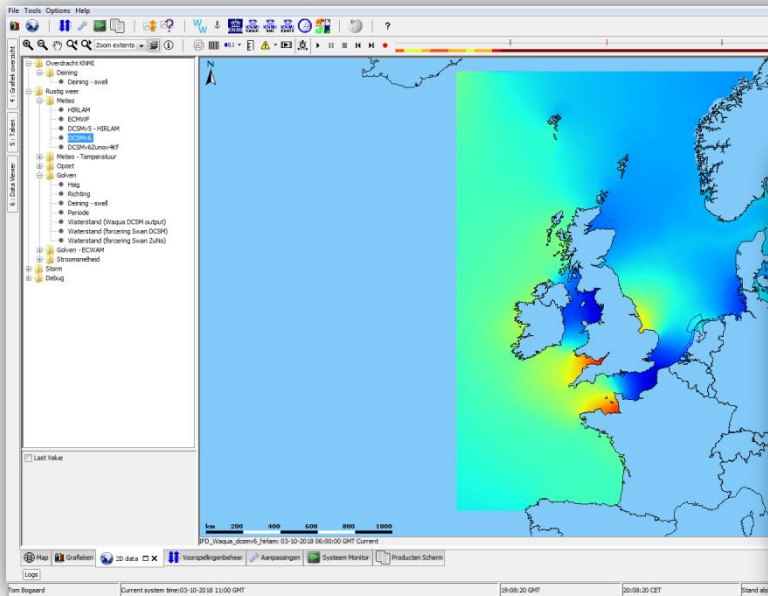
Open Source solutions:

- ncWMS (Thredds), ncWMS2, Adaguc server, SciWMS, Python libraries, Mapproxy.

FEWS WMS Service (2)

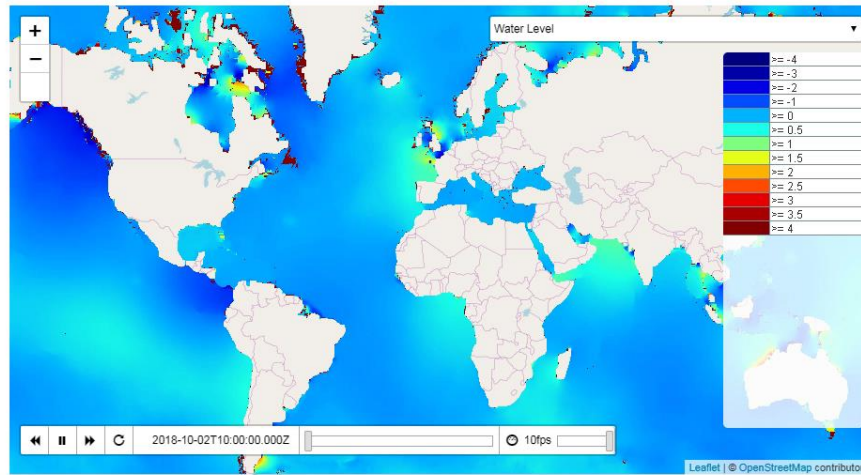


All layers configured in the FEWS Spatial Display can be requested





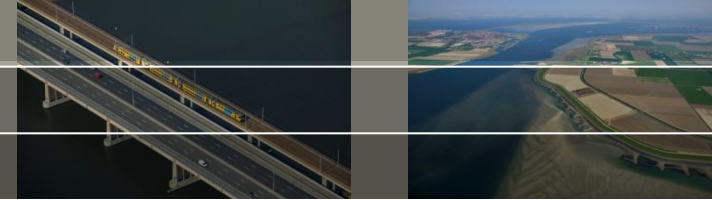
Delft-FEWS Web Mapping Service (WMS-T)



Copyright © Deltares 2017



What's next?



First version available in FEWS 2017.02

- Connecting to FEWS database (SA and DDA)

