



What's New in Delft-FEWS...

13th International Delft-FEWS User Days

20 October 2017



Marcel Ververs

Now:

Delft-FEWS PM for S&M Contracts

FEWS-History...

FEWS Configurator

- FEWS-Rivers (2004)
- EA NFFS (2005)

FEWS PM S&M (2008)



Gerben Boot

Now:

Delft-FEWS PM for Developments

FEWS-History...

FEWS Developer (2005)

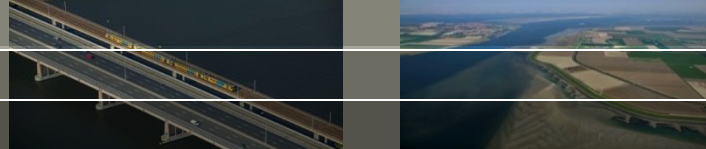
- Report Module
- EA Webserver

FEWS PM S&M (2006)

FEWS PM Developments (2008)



Who is (not) new...



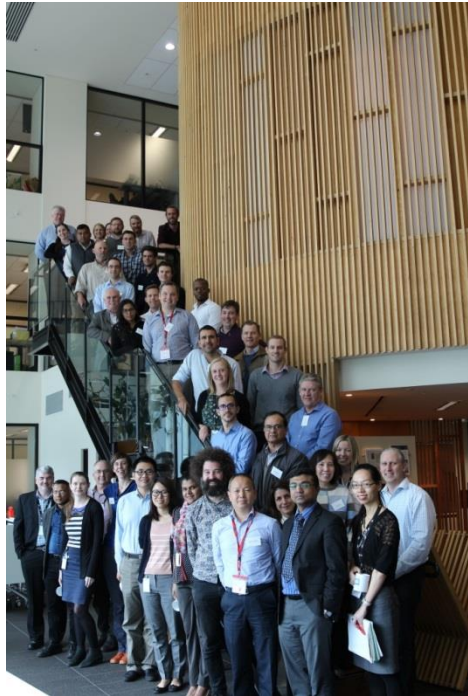
Just raise your hand...

Who of you (or your organisation)...

- was present at the International Delft-FEWS User Days in 2016...
- is **new** to the International Delft-FEWS User Days...
- has been here before – not for a while – and now **back again**....
- was present at the very **first** International Delft-FEWS User Days...
- has been present **more than 10 times**...

...take out your badge, grab a pen and write down your 'year'...

Who's where...



26.04.2017
Delft-FEWS User
Meeting Australia & Asia

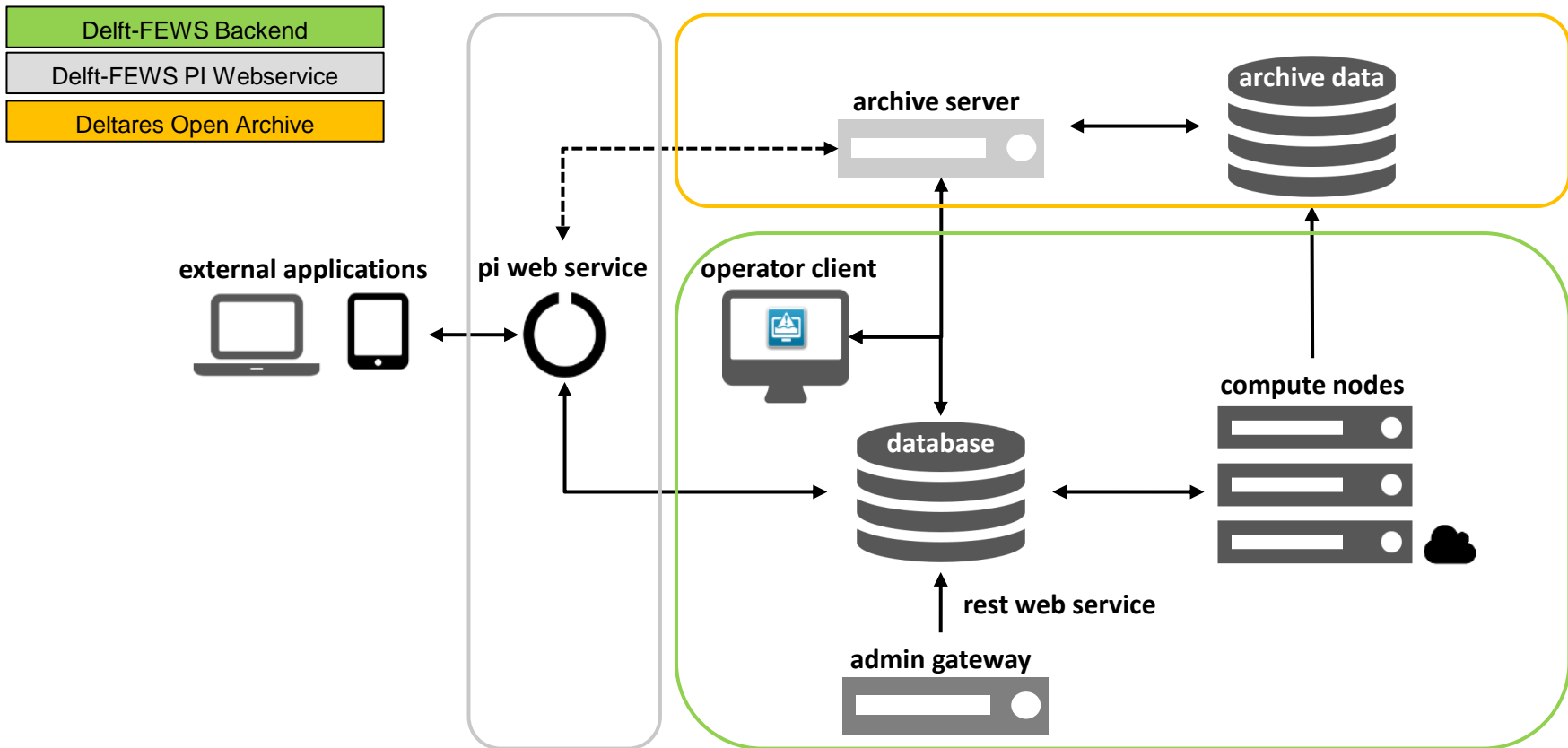


07.09.2017
Delft-FEWS User Day
for German speaking
users in Vienna



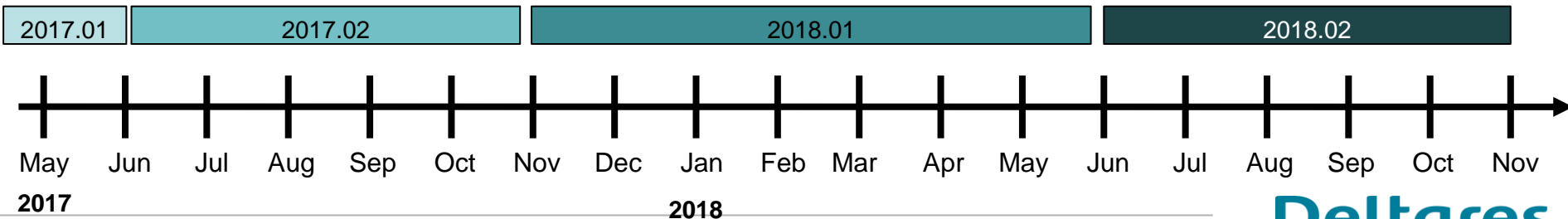
13.06.2017
Delft-FEWS User Meeting NL

Where are we aiming at: FEWS 2020 roadmaps...

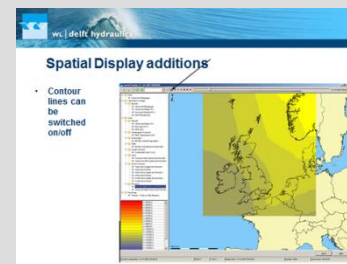
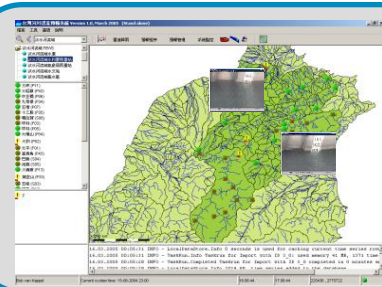
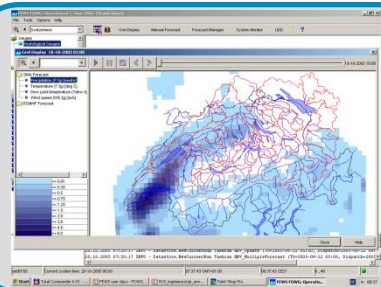
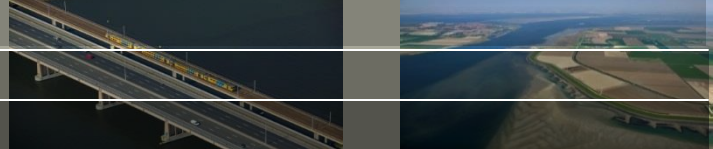


What is our roadmap implementation plan...

- All roadmap developments depending on community financing...
 - Developments started in June 2017
 - Developments completed end 2018 / early 2019
- Stepwise implementation of roadmap developments
- Smooth transition of existing systems using stable releases
- Roadmap developments next to project software developments...



What was the message in...



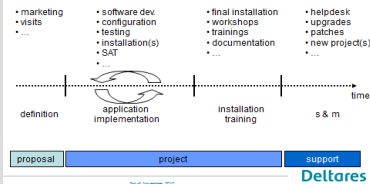
Software development (2009)

- many new features
- focus on Interactive Forecast Display (IFD)
 - local runs and modifiers
 - dockable windows
- performance improvements
- configuration support tools
 - workflow navigator
 - database viewer
- new thresholds module
- etc...



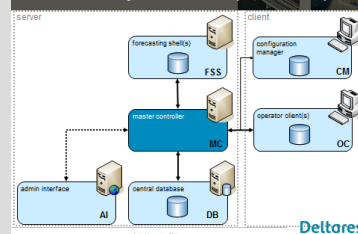
Deltare

Delft-FEWS project activities



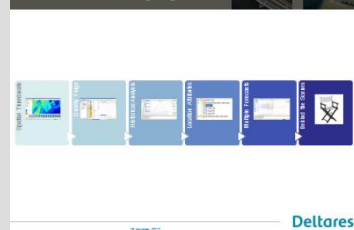
Deltare

Delft-FEWS system overview (client-server)



Deltare

New Features Highlights



Deltare

FEWS Developments 2013

- Looking at FEWS developments from different roles and perspectives...



Deltare

Just a FEW(s) faces...

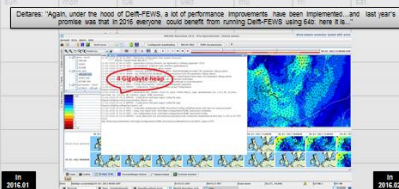


The faces behind the features...

Deltare



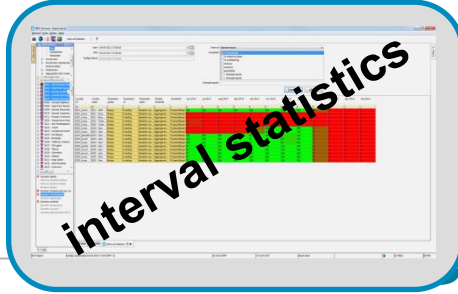
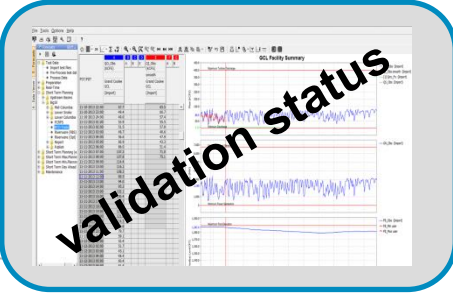
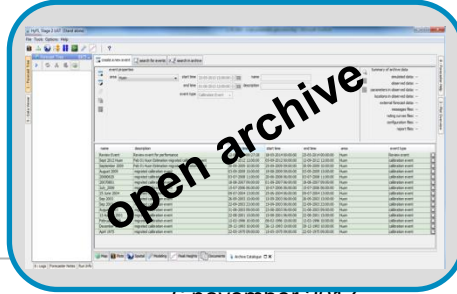
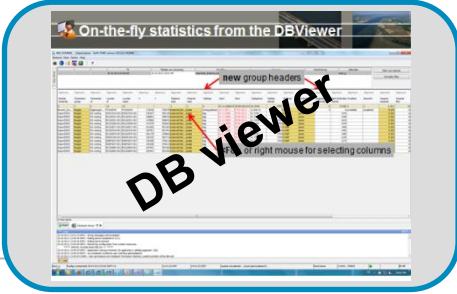
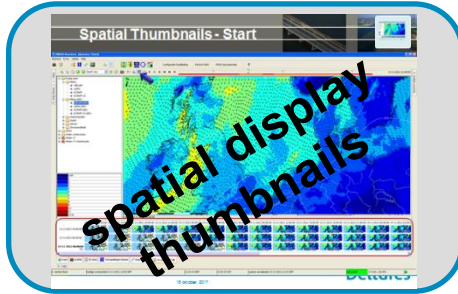
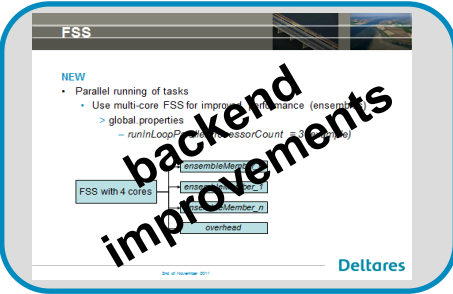
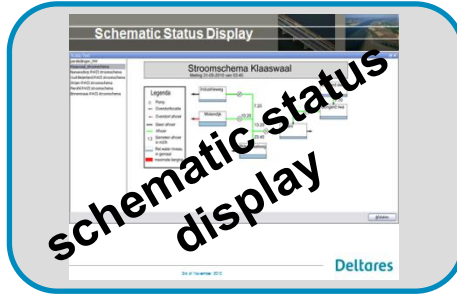
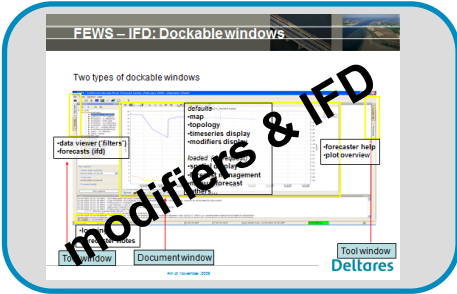
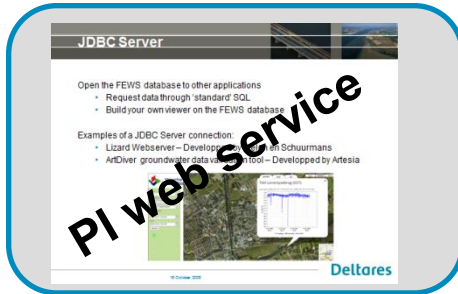
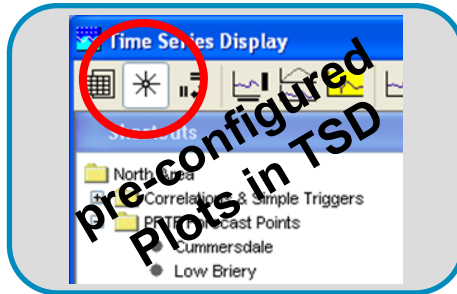
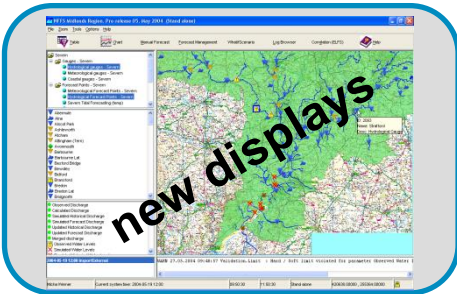
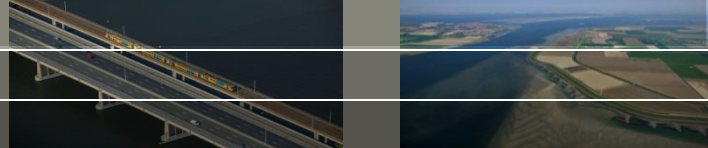
FEWS Feature Calendar... January



10/10/11

10/10/11

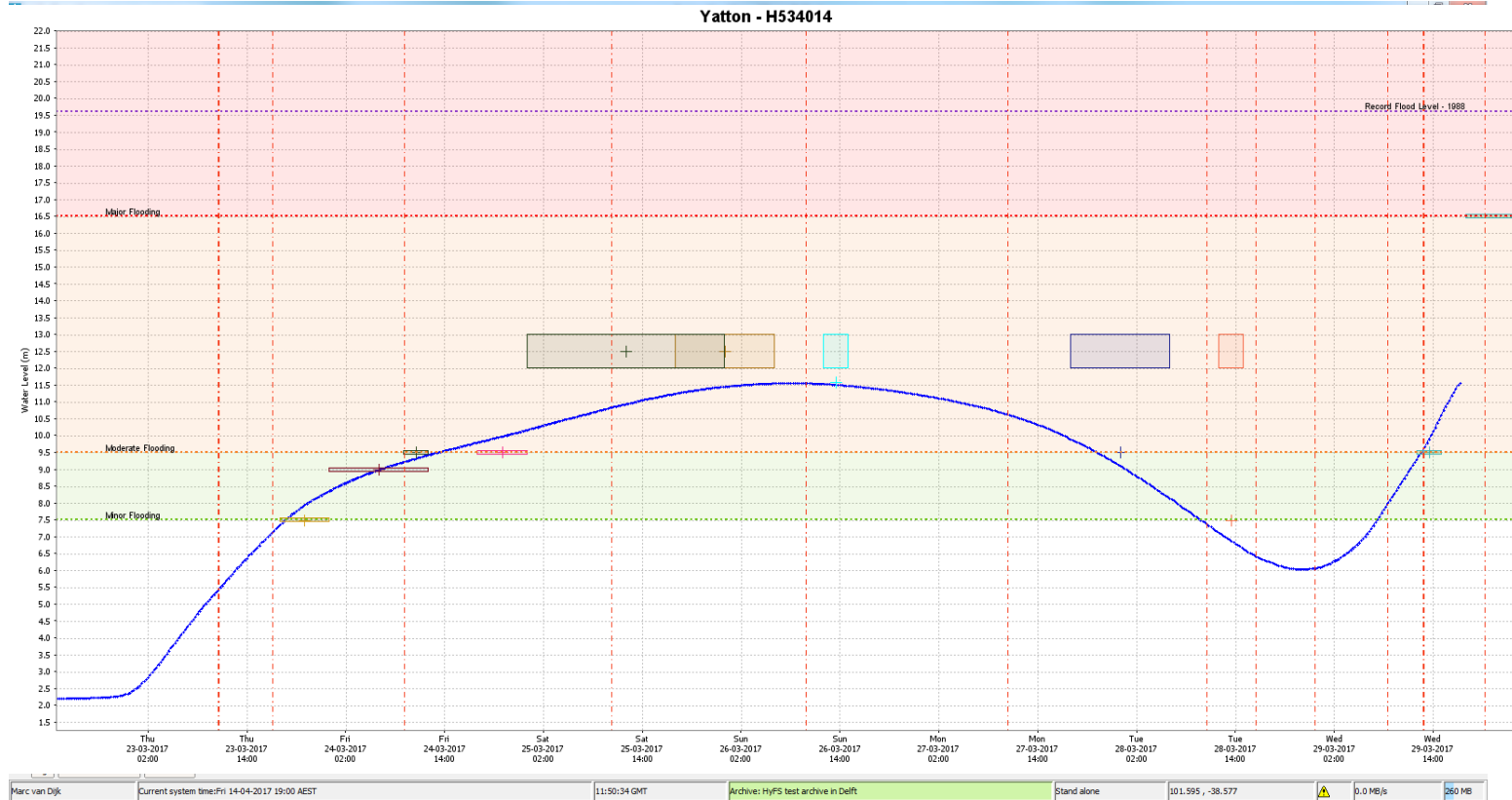
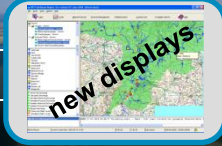
What was new...



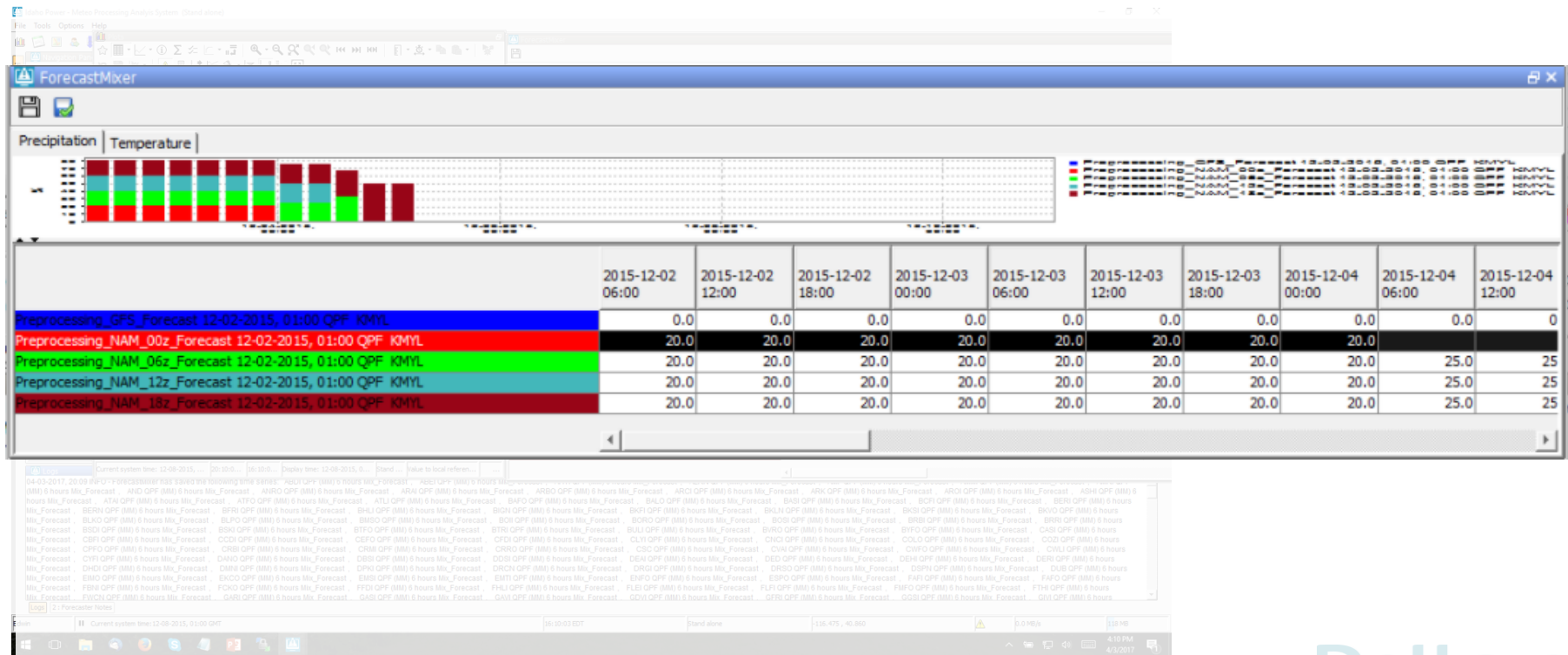
A screenshot of the ArcGIS Desktop software interface. The main window displays a map of a geographical area with various data layers. A large, stylized text overlay reads "new displays".

6 november 2017 Deltares

New display: Verification Analyst Tool



New display: Forecast Mix Display

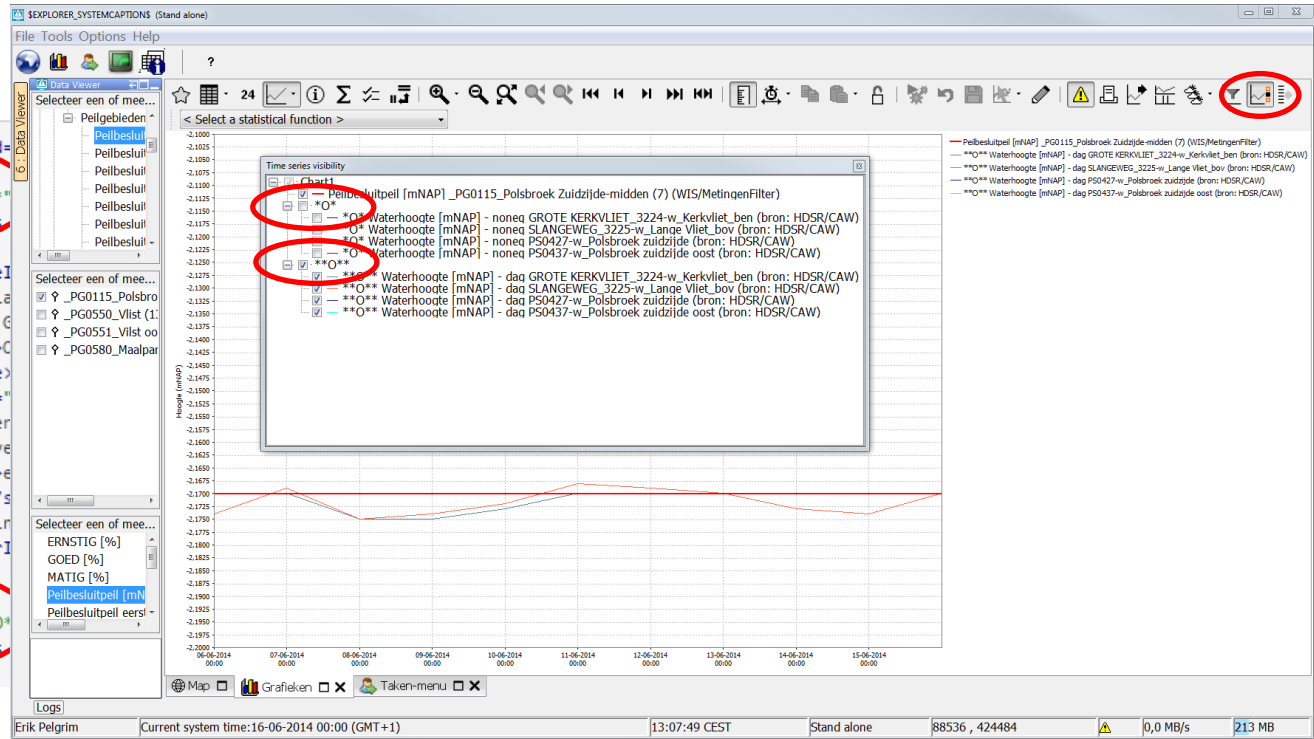


TSD: Related time series



Filters.xml

```
<attributeTextEquals id=
</locationConstraints>
<additionalTimeSeries name="**O**"
<locationFunctionEquals
<timeSeriesSet>
<moduleInstanceI
<valueType>scala
<parameterId>H.G
<locationSetId>O
<timeSeriesType>
<timeStep unit="
<relativeViewPer
startOve
<readWriteMode>e
<synchLevel>1</s
<ensembleId>main
<ensembleMemberI
</timeSeriesSet>
</additionalTimeSeries>
<additionalTimeSeries name="**O**"
<locationFunctionEquals
<timeSeriesSet>
```



Shift+F5 Update SA with latest Config (Archive)



HyFS-SA (FEWS-2014.02-6.0) (Stand alone)

File Tools Options Help

Load Layout
Save Layout
Default Layout
Reload Configuration F5
Load latest archived configuration Shift+F5
Exit

6 : Data Viewer

- Process Meteo Forecasts
- Catchment Interpolations
- Map Model Parameters to Spatial

Update Client

- Archive
- New South Wales
- Northern Territory
- Queensland
- South Australia
- Tasmania

Warm state selection

Time zero: Tue 11-04-2017 07:30:00

Forecast length:

edit run options

7 : Reports Archive

4 : Plot Overview

Map Plots Spatial Modeling Peak Heights Reports

Logs

2 : Forecaster Notes 3 : Run Info

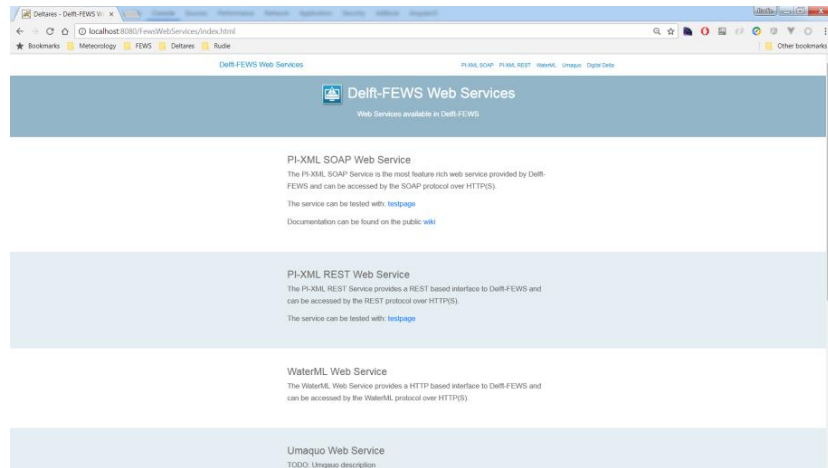
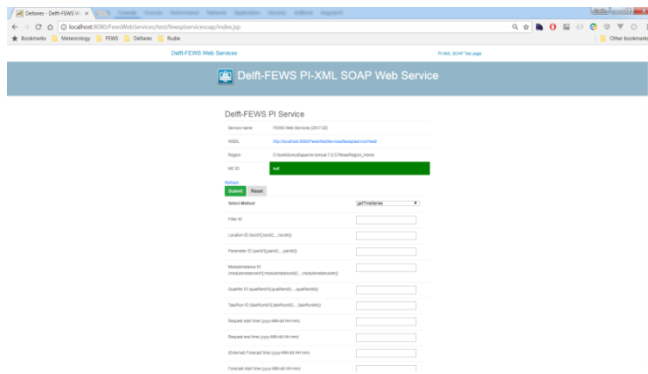
Jitka Tacoma - Nejedla Current system time: Tue 11-04-2017 07:30 GMT 08:18:11 GMT Archive: HyFS test archive in Delft Stand alone 119.808 , -25.341 0.0 MB/s 232 MB

Roadmaps: Delft-FEWS PI web service


Delft-FEWS PI Webservice

2017.02

- New framework ready for hosting different types of web services → single install-file / minimum configuration
- Aligning methods between PI SOAP and REST web services
- Code-cleanup & test environment ready
- Improved documentation + test page



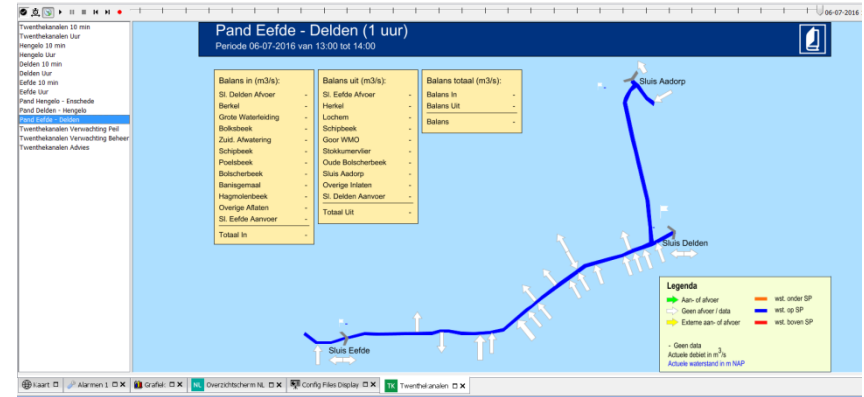
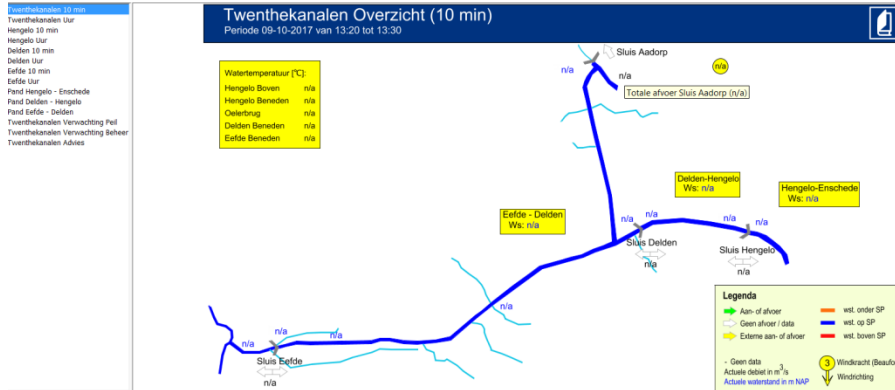
- Tennessee Valley Authority (Stand alone)



Schematic Status Display:



- Configurable background color
- More visible/clickable no-data character



Roadmaps: Backend Simplification & Automation



Delft-FEWS Backend

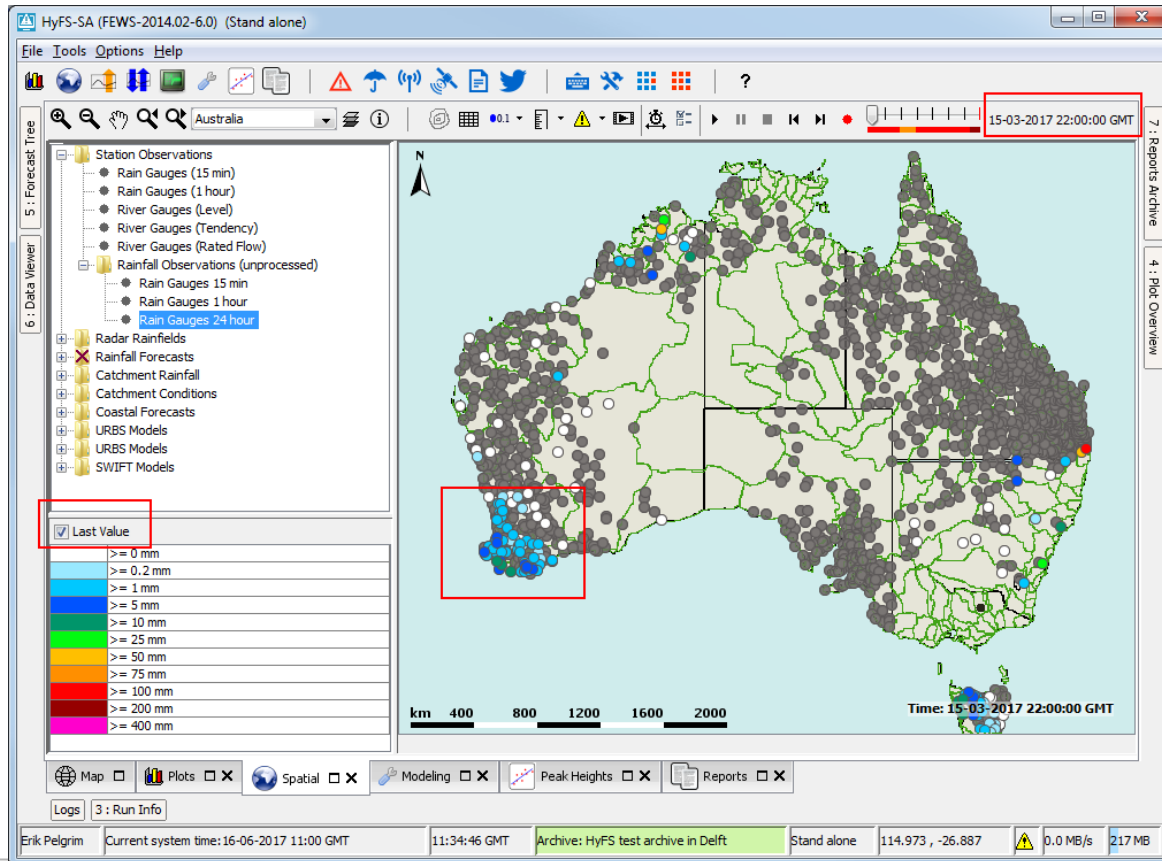
2017.02

- DDA = default (including Configuration Manager)
- Removal of JMS...(get rid of JBOSS or ActiveMQ)
- MC-MC synchronisation still in place...
- (new way of) profile based synchronisation...



Temporarily **not available**: remote login (secure) → back in 2018.01...

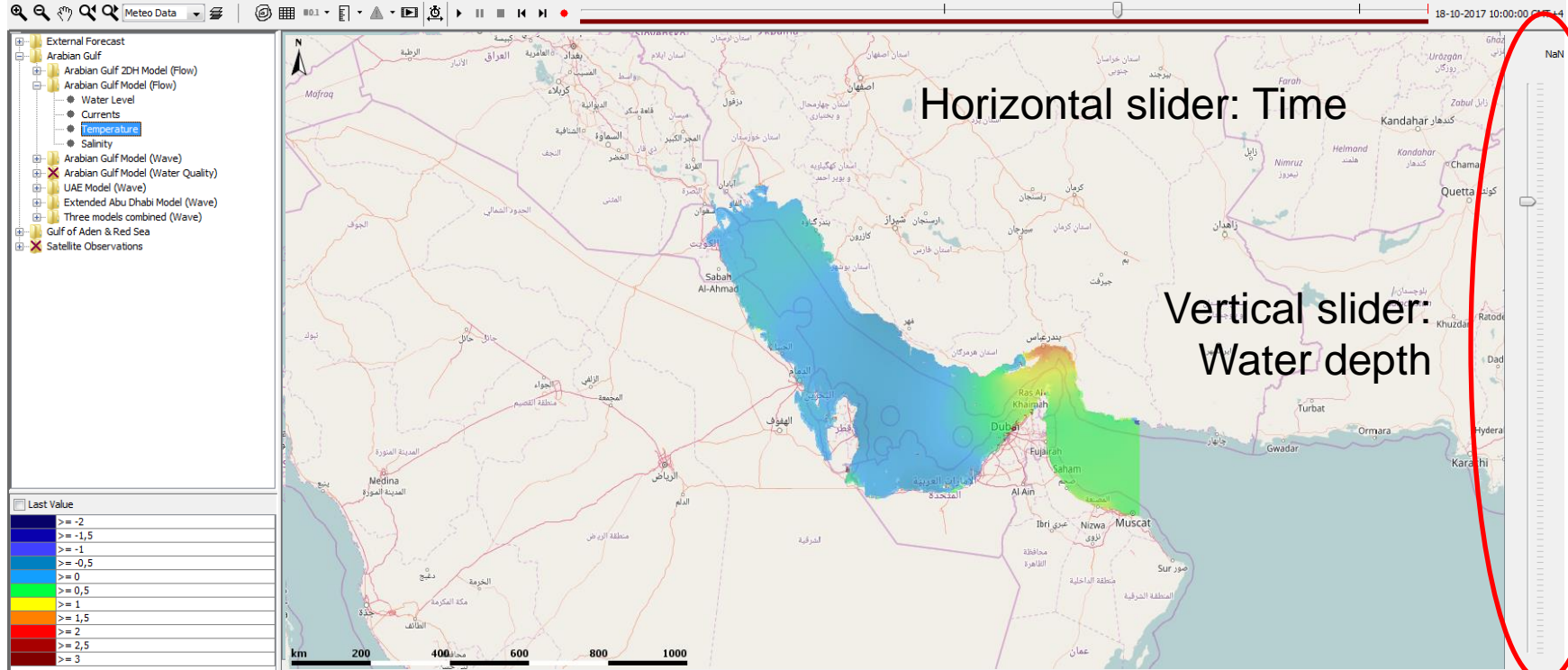
Spatial display: show last value



6 november 2017

Deltares

Spatial display: vertical slider



On-the-fly statistics from the DB viewer!

DB viewer

GROUP BY

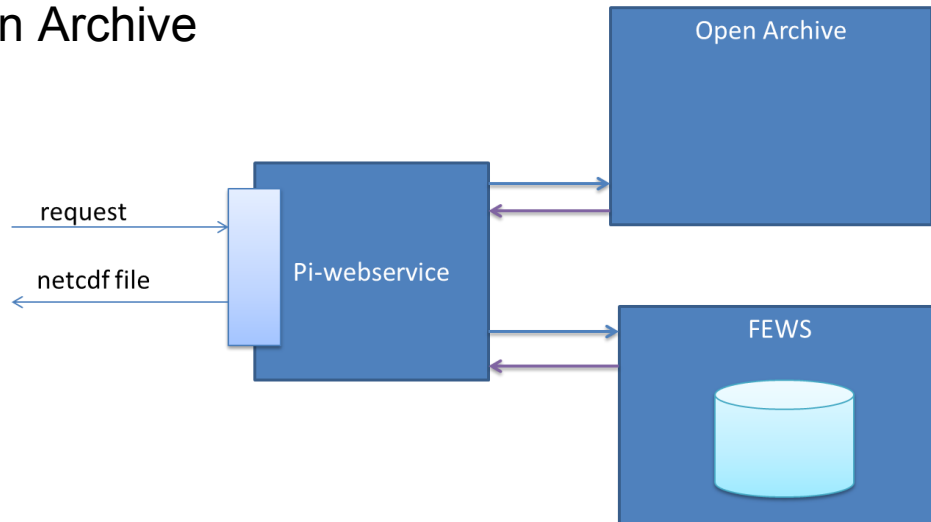
Deltares

Roadmaps: Open Archive

Deltares Open Archive

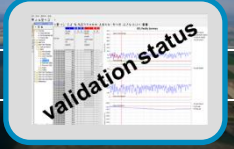
2017.02

- Seamless integration of *forecast timeseries* (observed already possible)
- Robust checks implemented exporting to archive (checksums)
- Send 'requests' directly to Open Archive
 - Get certain grid extent...
 - Transform data...

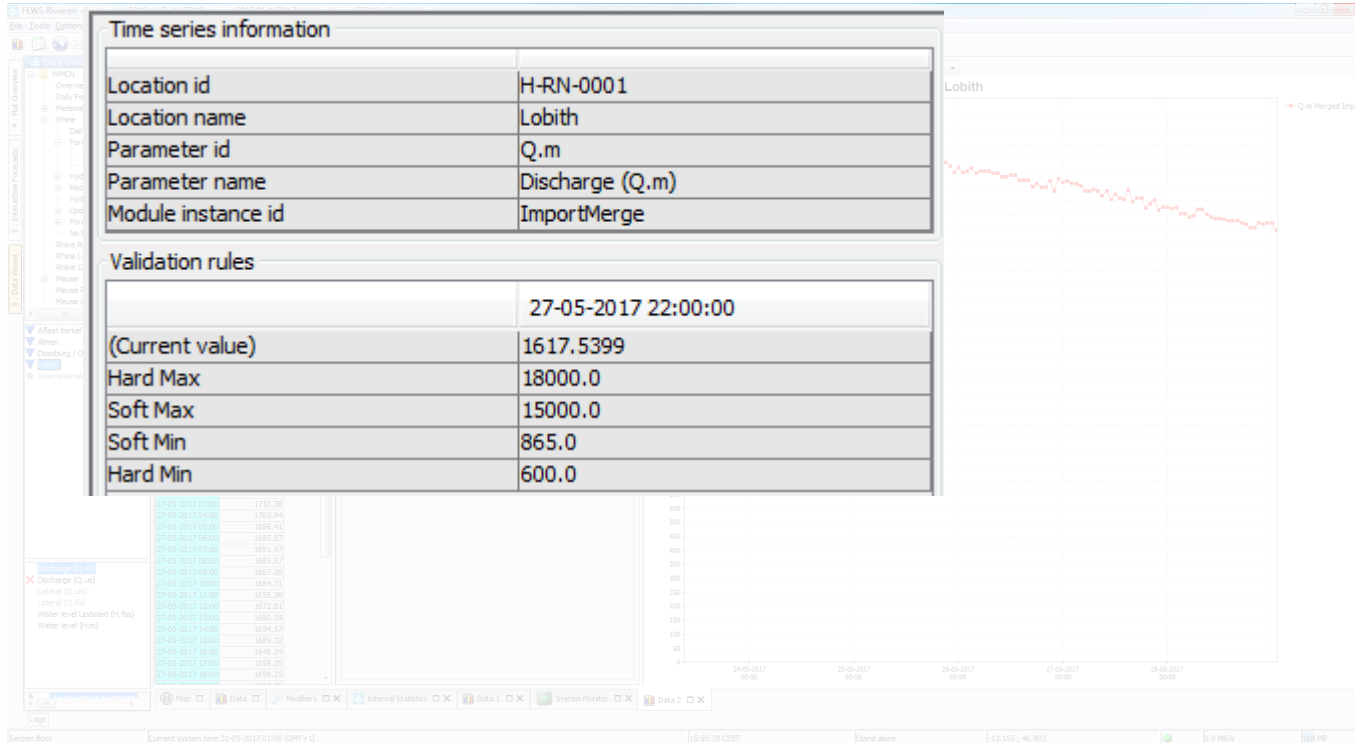


Deltares

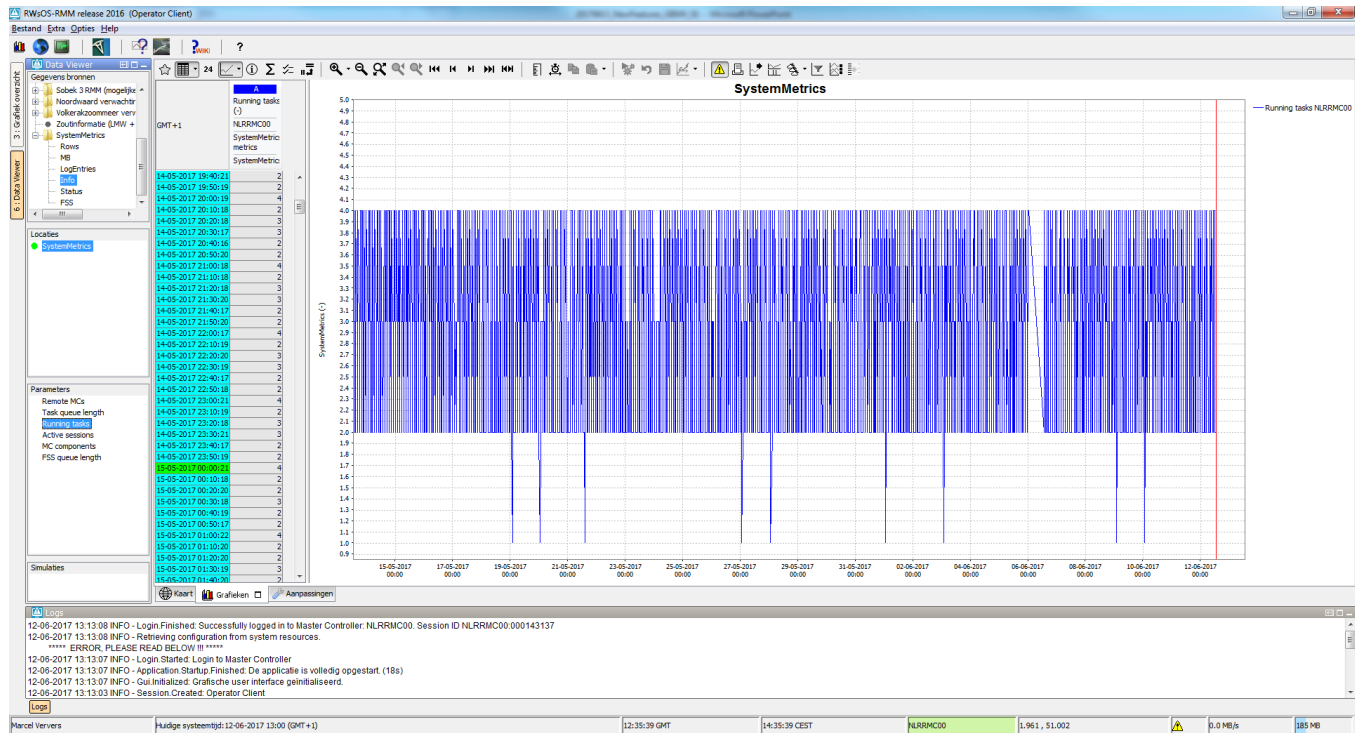
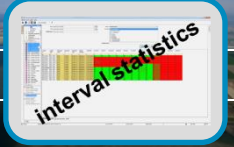
Validation: Show validation rules (selected location)



Time series information – Validation Rules



Statistics: System Metrics in Operator Client



- Timeseries records
- Database records
- Database size (MB)
- Logentries
- Connected users
- FSS capacity usage

but also:

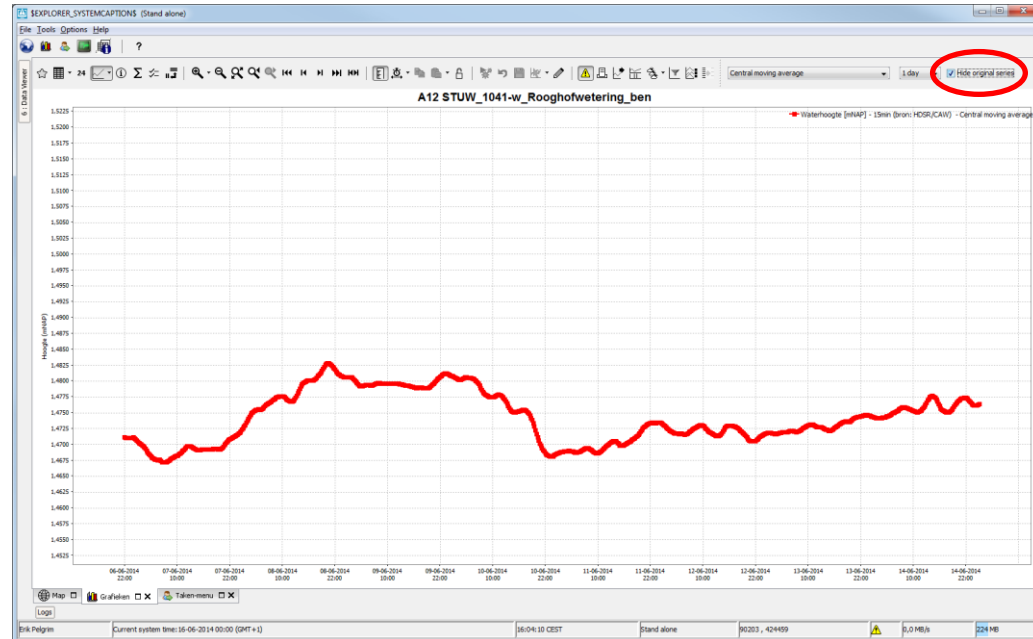
- MC / FSS status
- FSS queue length
- Size database tables
- Nr spec. eventcode
- ... for all MC's

Statistics: Hide original series (with statistics)

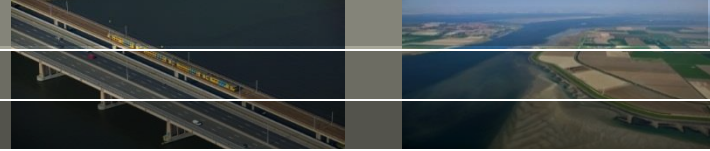


- Checkbox for hiding original timeseries (statistical functions)

- Differences
- Duration exceedence
- centralMovingAverage
- movingAverage
- accumulationAggregation
- calendarAggregation
- cumulative
- relativeAggregation
- accumulationInterval

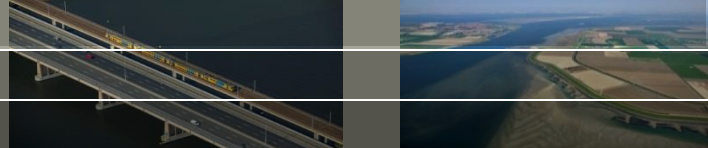


Community Strategy Board



- Defining Topics 2018 (sticky notes)
- Communication of CSB → community
- Process distributing patches / informing community
- Guest at CSB (NRW share experiences with Delft-FEWS in the cloud)

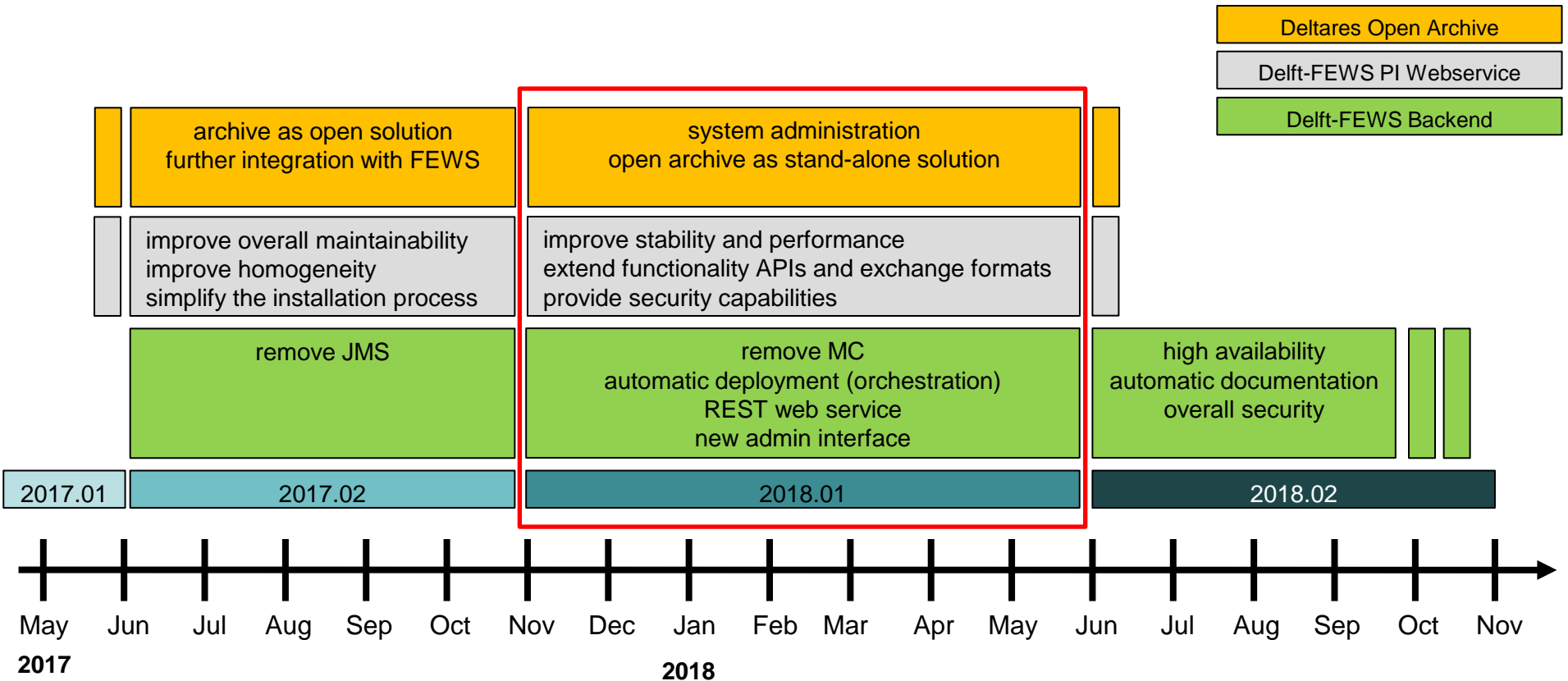
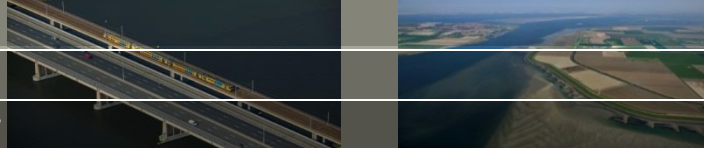


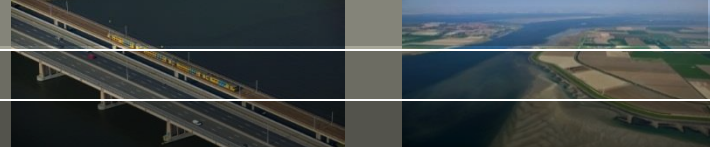


- Requests for developments:
 - Selections 'sets of modifiers'
 - Running server runs with user specific modifiers
 - Exports of KMZ information (icons/info-balloons)
 - More legend options
 - for shape-file classifications
 - DTMs
 - Schematic Status Displays in reports
- Continued development work on Roadmaps (Backend, Archive, PI webservice)
- Part of roadmap work:
 - Optimize snapshot functionality
 - Secure remote access

Implementation plan roadmaps...

Version: October 2017





FEWS news: issue 4, 2017

Productmanagement news



Coming up! Delft-FEWS Release 2017.02: first Delft-FEWS 2020 roadmap features in...

Developments for the autumn release of Delft-FEWS (2017.02) are progressing well. More than 80 small and large features are planned to be implemented, amongst others many visual improvements to different displays. Relevant to mention is that we are also really busy implementing the 3 Delft-FEWS 2020 roadmaps. [Read more...](#)

CSB updates



Meet and greet with CSB members

Do you want to meet the members of the CSB in person? That is possible at the Delft-FEWS International User Days on October the 25th and 26th. In the last CSB meeting in September we discussed how the CSB could be more visible and accessible for the whole Delft-FEWS community and now we have found the perfect opportunity. [Read more...](#)

International projects



Globalfloodforecast.com goes live

On the 28th of July 2017 Deltares launched globalfloodforecast.com. This website allows the user to browse through the results of our global information systems on storm surge and flood forecasting. The models are continuously monitored, validated and improved based on hundreds of observation points and unique events such as hurricane Irma. [Read more...](#)



FEWS Wales in the cloud

Since the beginning of 2017 FEWS Wales has been running as a fully operational forecasting system within a third party cloud environment in the United Kingdom. Deltares and Natural Resources Wales have been working together to migrate the existing forecasting system and to ensure that required functionalities work within the cloud

FEWS-NEWS #4

International projects:

- Globalfloodforecast.com goes live
- FEWS Wales in the cloud

Community:

- German, Austrian and Swiss Delft-FEWS users meet in Vienna
- Inspiring master class MILE in Durban, South Africa

Blog:

- RWsOS: the Rijkswaterstaat clustered operational systems

www.delft-fews.com > FEWS news

Subscription via: fews-news@deltares.nl

Release Notes

Deltares
Spaces
Blogs
Browse
Create

DELFT-FEWS Documentation / ... / Delft-FEWS Release Notes

What is new in Delft-FEWS 2017.01

Created by Gerben Boot, last modified on 14-06-2017

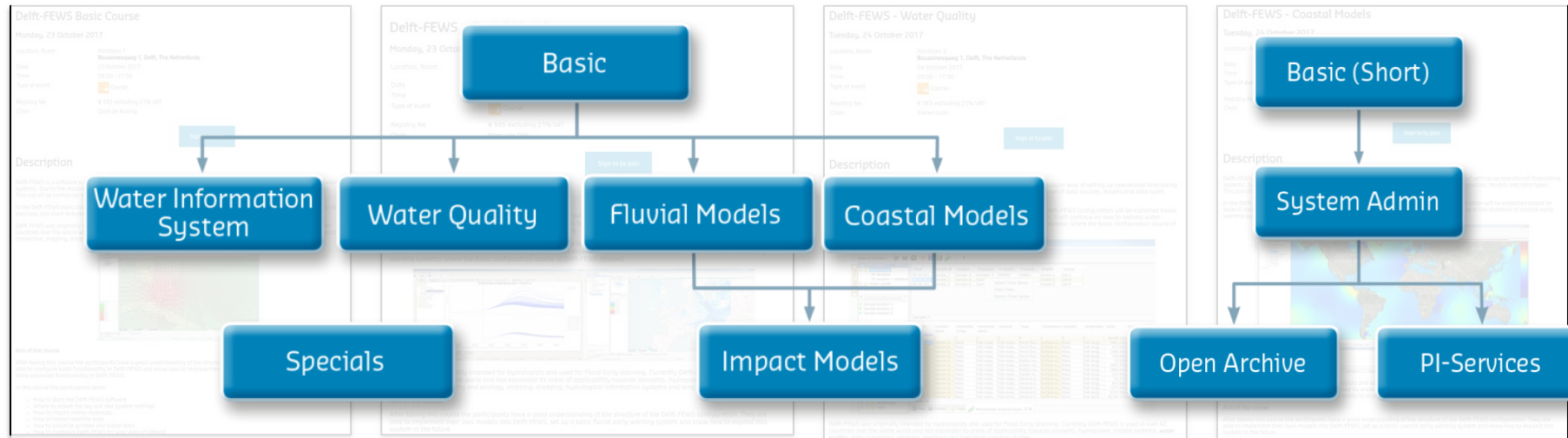
Below the Release Notes (New Features) are displayed. Most features contain a direct link to the documentation. Due to file size restrictions the column containing the 'Image' could not be added.

Delft-FEWS 2017.01 New Features

| Component/s | Customer name | Key | Summary | Release Note Text | Release Note Text Description | Link to Documentation | Config Example |
|---|---------------|------------|---|--|--|---|----------------|
| App - Archive | BPA | FEWS-16882 | FEWS-15003 make it possible to access elastic catalogue by the pliveservice | access the elastic catalogue by the pliveservice | In the future it will be possible to access the elastic catalogue by the pliveservice. In this release a temporary version is available. It is mainly used for demo and evaluating purposes and will be extended later to final production version. | | |
| App - Archive | BoM (Aus) | FEWS-16892 | FEWS-15665 HyFS-Archive: Improve configMetadata.xsd | Improvement of the elastic catalogue | The internal naming of the elastic catalogue and the code is improved to make it more clear what the actual fields of the catalogue mean. | https://publicwiki.deltares.nl/display/FEWSDOC/25.+Using+the+Deltares+Open+Archive | |
| App - Master Controller Server System | Deltares | FEWS-12957 | Improvement to MC restarter script for Windows: does not use JAVA_HOME from registry | Improvement to MC restarter script for Windows: does not use JAVA_HOME from registry | IRE home directory is now passed as an argument in the restarter scripts | https://publicwiki.deltares.nl/display/FEWSDOC/MC+Restarter+process | |
| App - Master Controller Server | Deltares | FEWS-16672 | Make config expiry time taskrun/workflow redundant. Rolling barrel should auto correct expiry times | Expiry time in workflow descriptors is now redundant | It is no longer required to configure the expiry time of workflows in the workflowDescriptors.xml or in the admin interface. The run will not expire before all produced time series / warm states and reports are expired. The amalgamate module will no longer complain about wrongly configured expiry times. The expiry time in the workflow descriptor is still used as default expiry time for simulated time series. | | |
| App - Operator Client (Explorer), Water Coach | BoM (Aus) | FEWS-15666 | FEWS-15665 HyFS-WC: Enable the SA to automatically update its configuration from PROD or UAT | Updating configuration with the latest archived configuration (SA only) | To update the configuration use File menu 'Load latest archived configuration (Shift+F5)'. Then the latest archived configuration and the associated metadata.xml will be downloaded and the currently used configuration will be replaced with the downloaded configuration. During this process a progress monitor-popup is visible and messages are logged in Logs panel. Also, the user might be prompted to update the configuration, if the last downloaded configuration is outdated. In this case the following message pops up immediately after starting Fews: "A new version of the configuration is available in the archive. You can update the current configuration using File -> Load latest archived configuration" | https://publicwiki.deltares.nl/display/FEWSDOC/25+WaterCoach | |

Delft-FEWS Courses

- New set-up
- Modular
- Flyer



Thank you...

