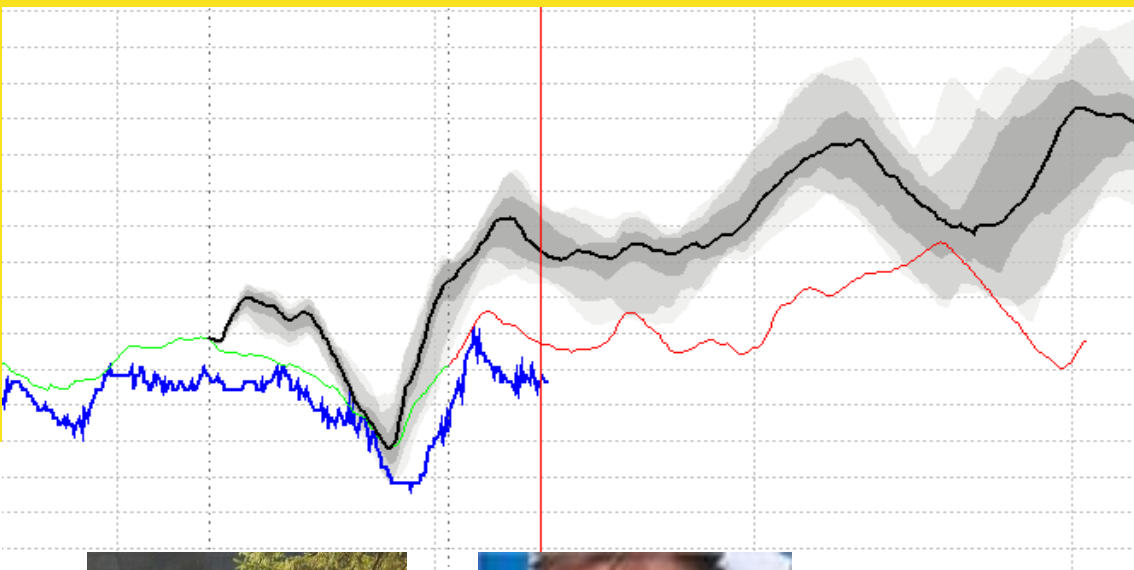




Rijkswaterstaat  
Ministerie van Infrastructuur en Waterstaat



## Web-based online Forecast Verification Tool

Delft-FEWS User Days  
5th November 2020



**Annette Zijderveld**  
Water Management  
Center of RWS



**Peter Gijsbers**  
Deltares

**Deltares**

 enabling delta life



# Outline

- (1) **WHY** do we want this tool ?
- (2) **WHAT** will the tool do?
- (3) **HOW** is it build?
- (4) **HOW** will it look like?
- (5) **Want** to join?



# WHY

- Water management centre of the Netherlands responsible for daily forecasts of water levels, discharge, tides, waves and currents for all water systems
- Higher uncertainties in extreme events



Drought



High Water



Environmental issues





# RWsOS

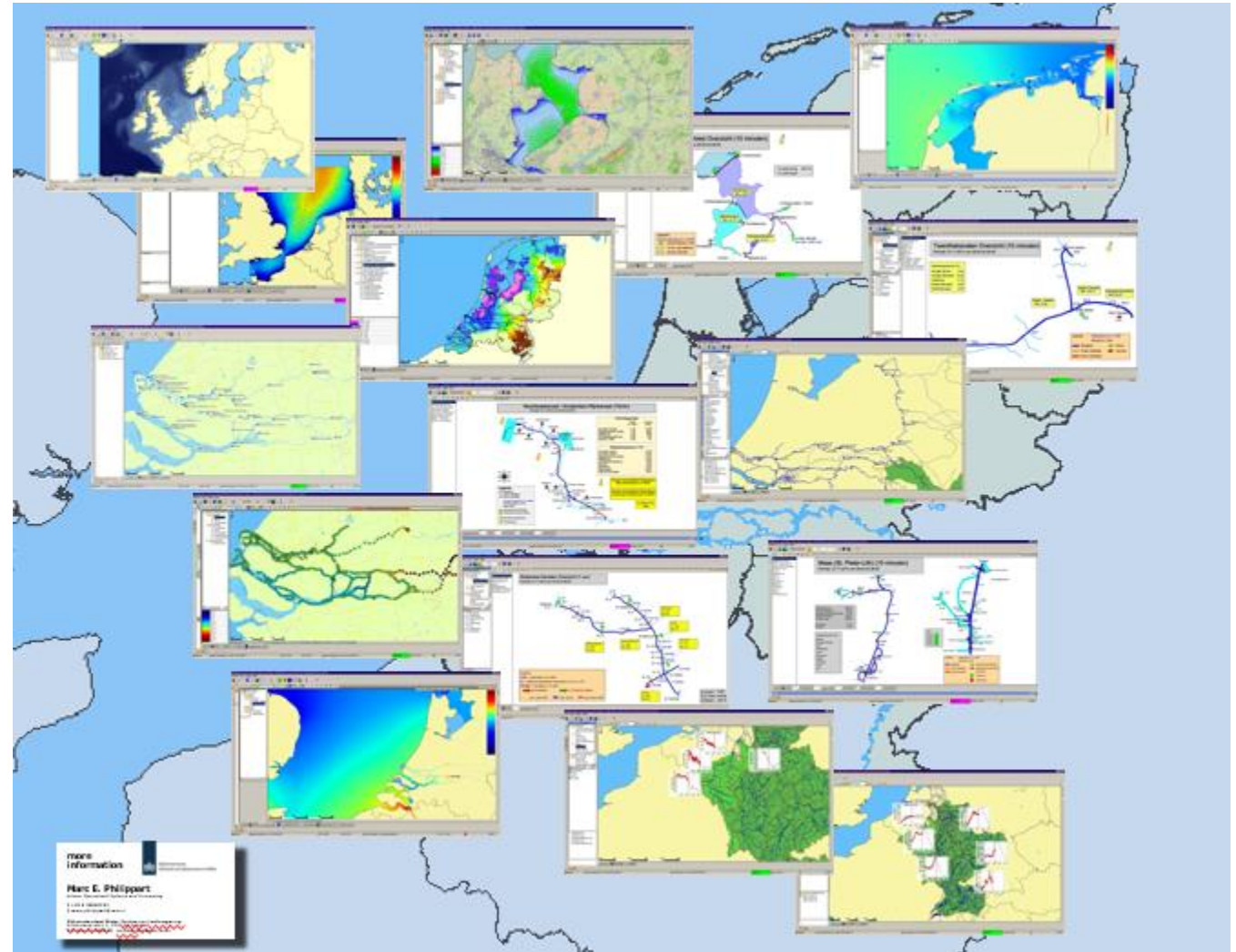
Modelling the waters from Switzerland tot Iceland  
for Safe and Sound watermanagement in the Netherlands



**Rijkswaterstaat**  
consistent Operational Systems

## WHY

- 7 different Delft-FEWS based operational systems running, 30+ different models based on 10+ different Meteo products
- Different groups of forecasters engaged @RWS, some groups daily, some groups only during storm surge/ flooding situations



**Deltares**



# WHY

- **Models are changing** over the years, characteristics might change unnoticed, and **extreme events** can make models behave very differently
- Validation and verification **reports** necessary, but by definition **often outdated**
- **Lot's of handwork** required to keep track – we can do this better!
- In operation we want to have **easy access** not only to model **accuracy information**, but also **reliability information** of the whole operational system (process).

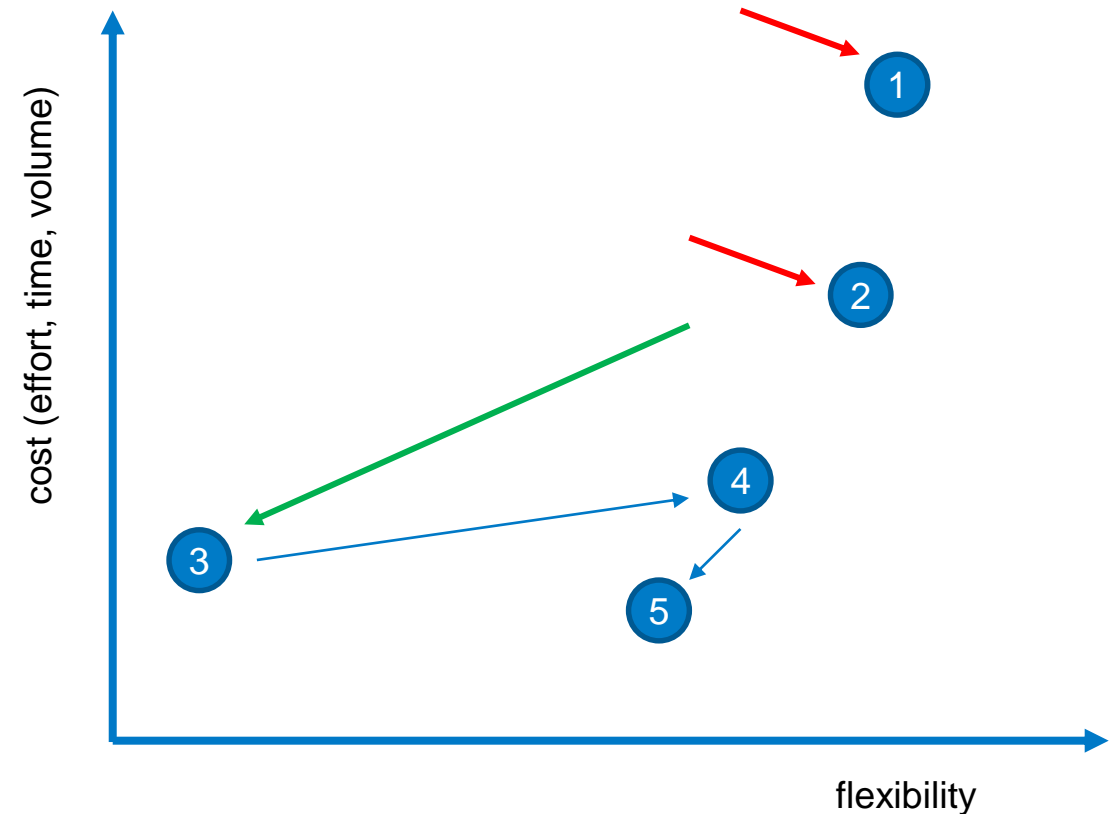




# WHY

## Verification procedures

- (1) manually compute verification metrics from recreated hindcasts
- (2) manually compute verification metrics from archived observations and forecasts
- (3) continuous computation and archiving of predefined verification metrics
- (4) continuous detection and archiving of observation-forecast pairings, compute verification metrics at moment needed
- (5) continuous computation and archiving daily verification metric increments, aggregate verification statistics as needed





# WHAT will the tool do?

- **ARCHIVE** all information and make it available for **web services**!
- Show **statistical parameters of deterministic model runs** and forecasts (2020)
- Show availability and quality information of **all observed parameters/ locations**
- Show **run time estimates** of all scheduled model runs – flag if runs are being delayed
- Show statistical parameters on **ensemble forecast quality**



## WHAT will be possible in future?

- Show statistical quality parameters of model performance by using **conditional filtering**
- 'Verification-as-a-service' by **calculating on-the-fly** statistical parameters on demand
- Make it very easy to **keep track of our forecast quality** – under all conditions and for all models and systems (without digging in excel each time ...)

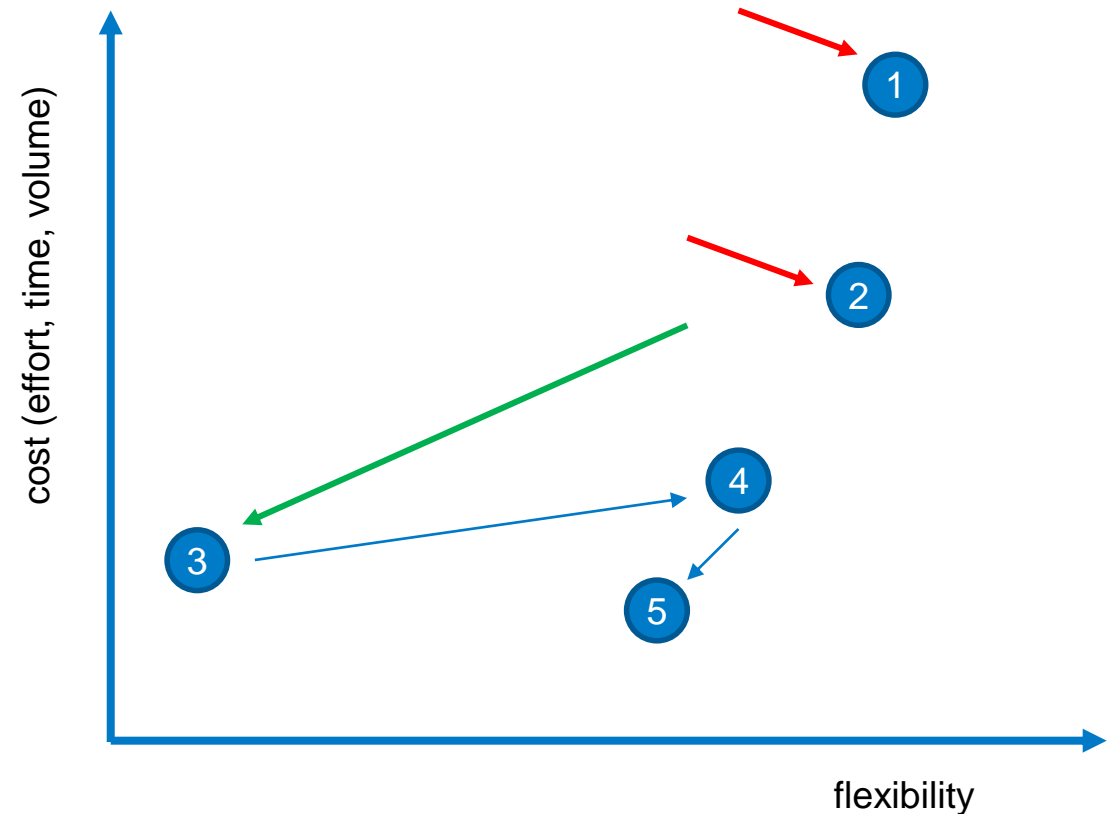




# WHY

## Verification procedures

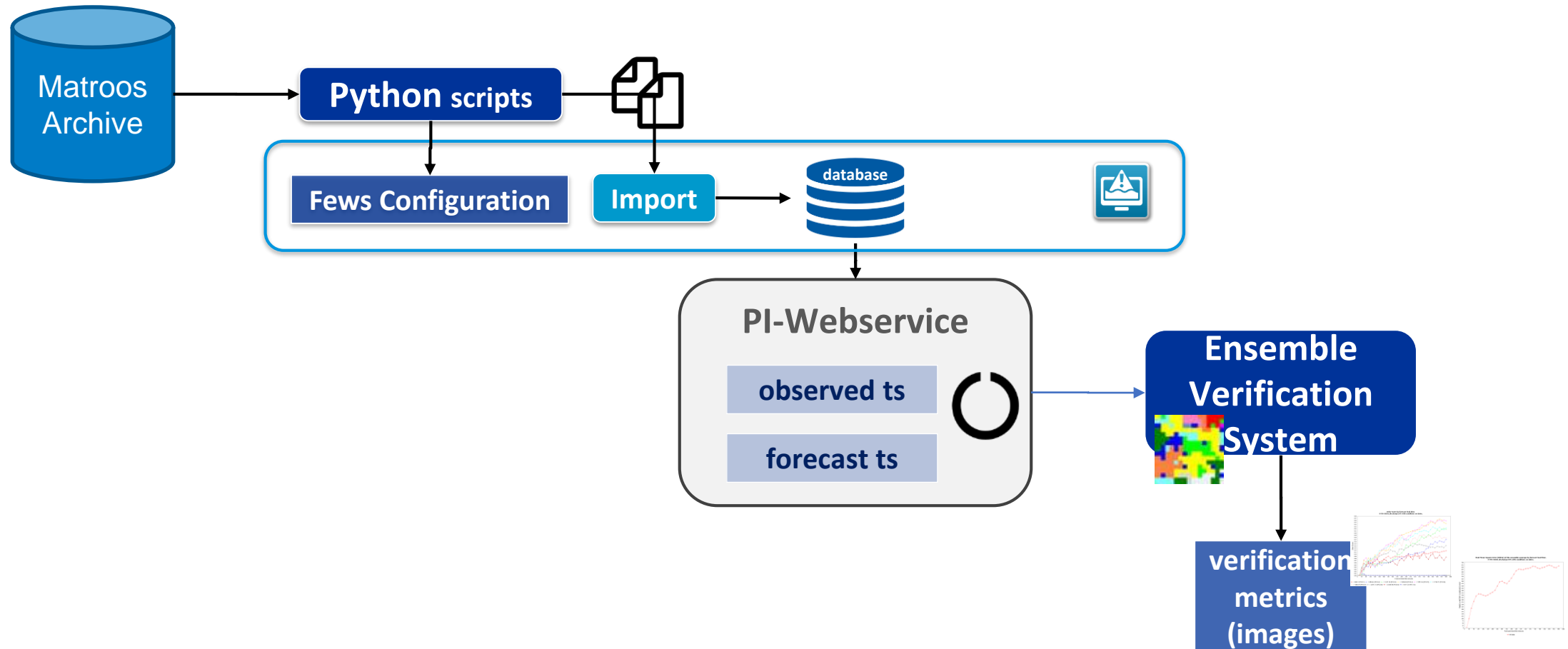
- (1) manually compute verification metrics from recreated hindcasts
- (2) manually compute verification metrics from archived observations and forecasts
- (3) continuous computation and archiving of predefined verification metrics
- (4) continuous detection and archiving of observation-forecast pairings, compute verification metrics at moment needed
- (5) continuous computation and archiving daily verification metric increments, aggregate verification statistics as needed





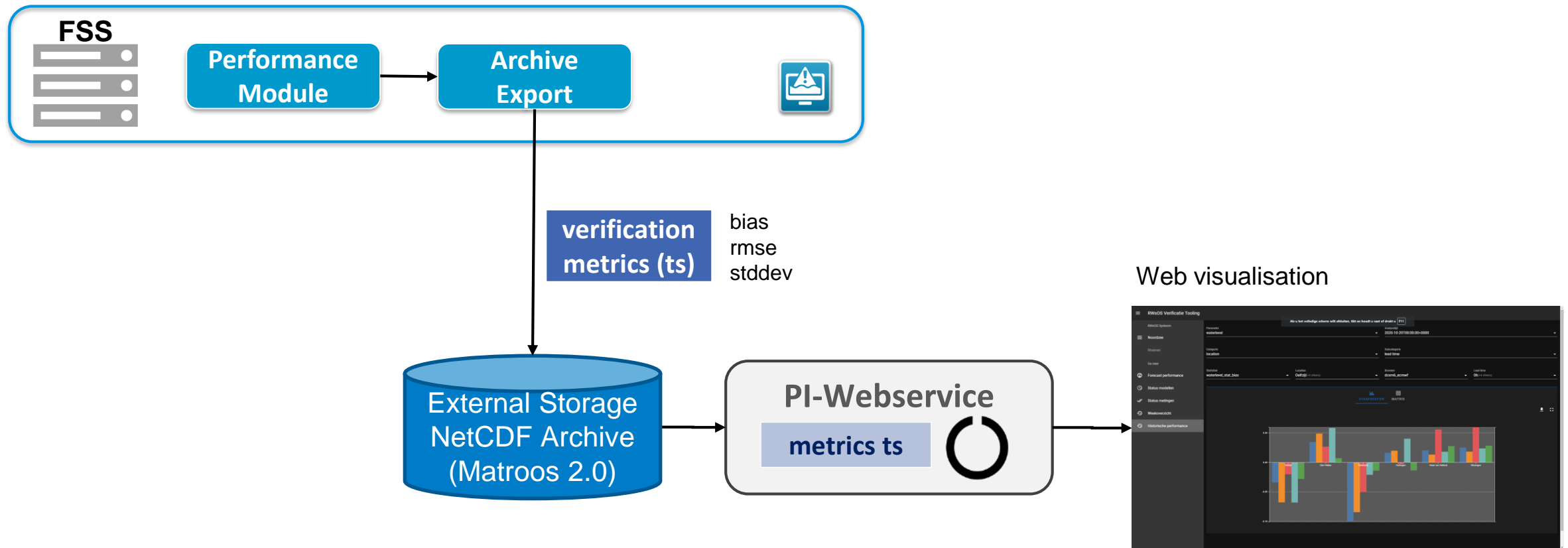
# HOW

## current manual process (2)



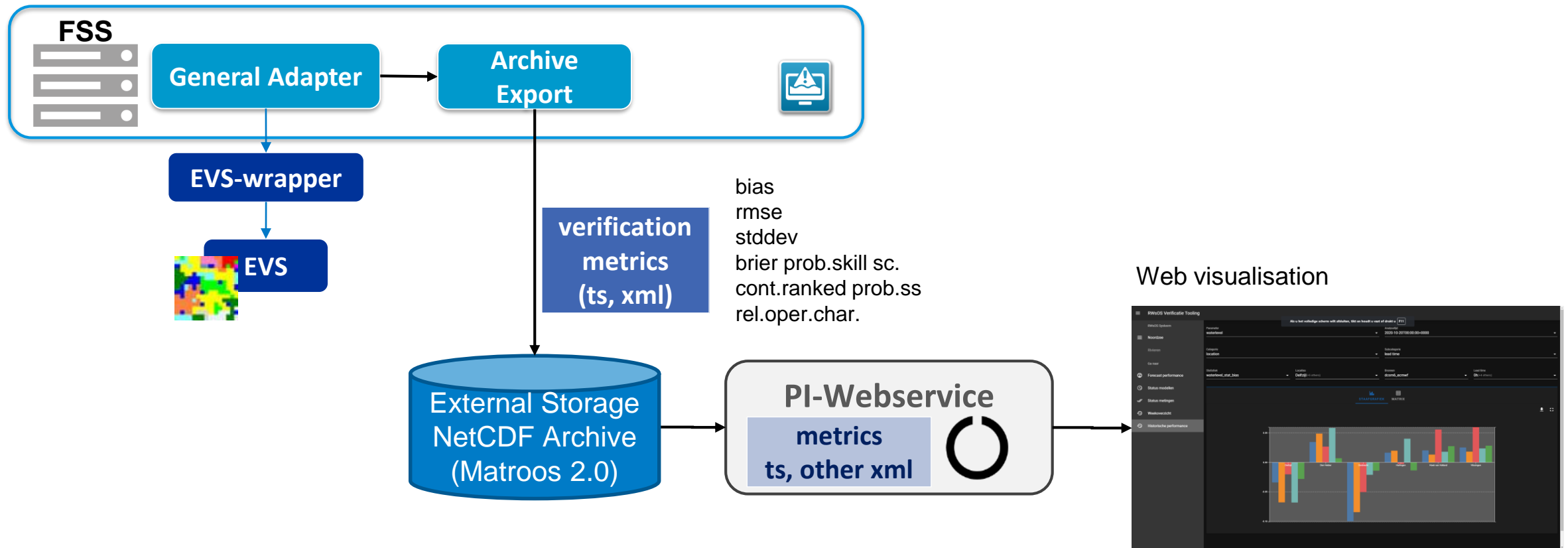


# HOW automation being implemented (3)



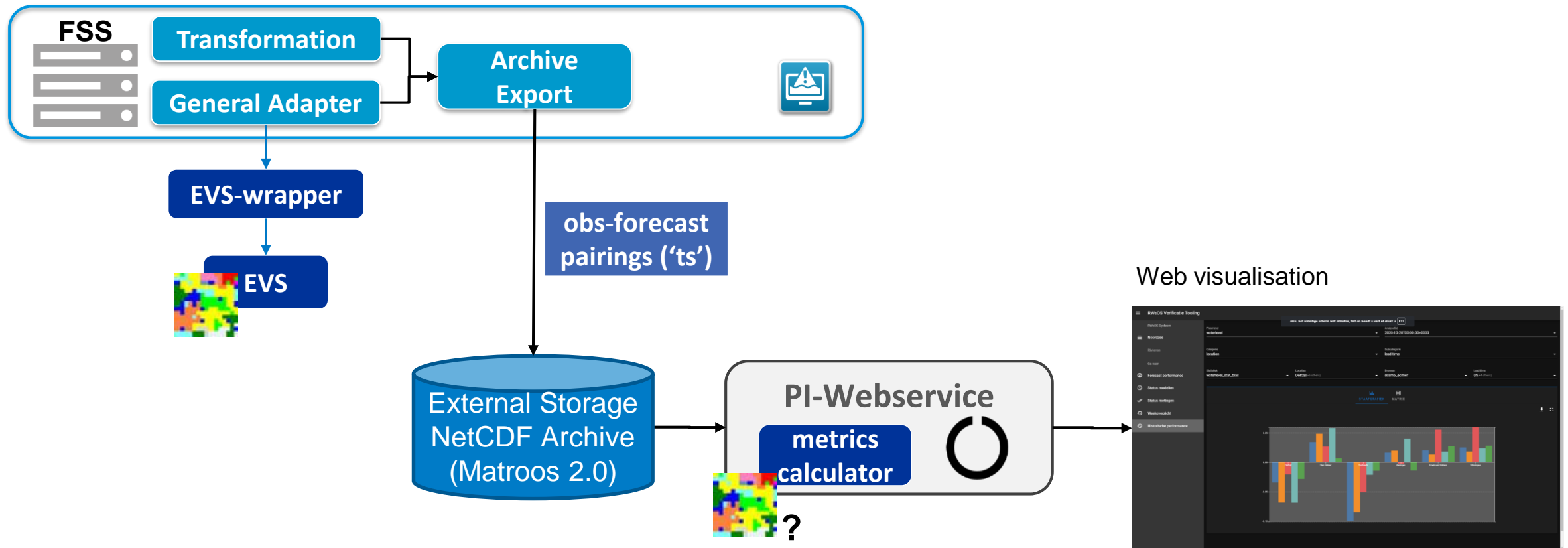


# HOW automation development being considered (3)





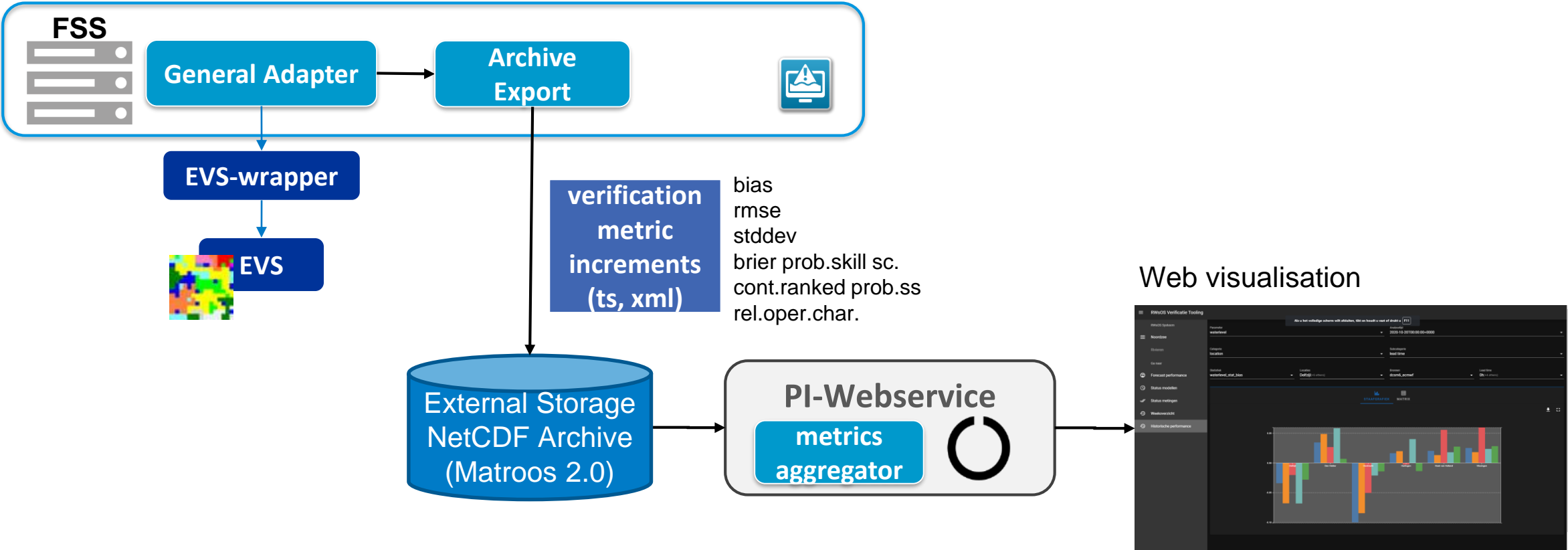
# HOW future automation to be investigated (4)



Deltares



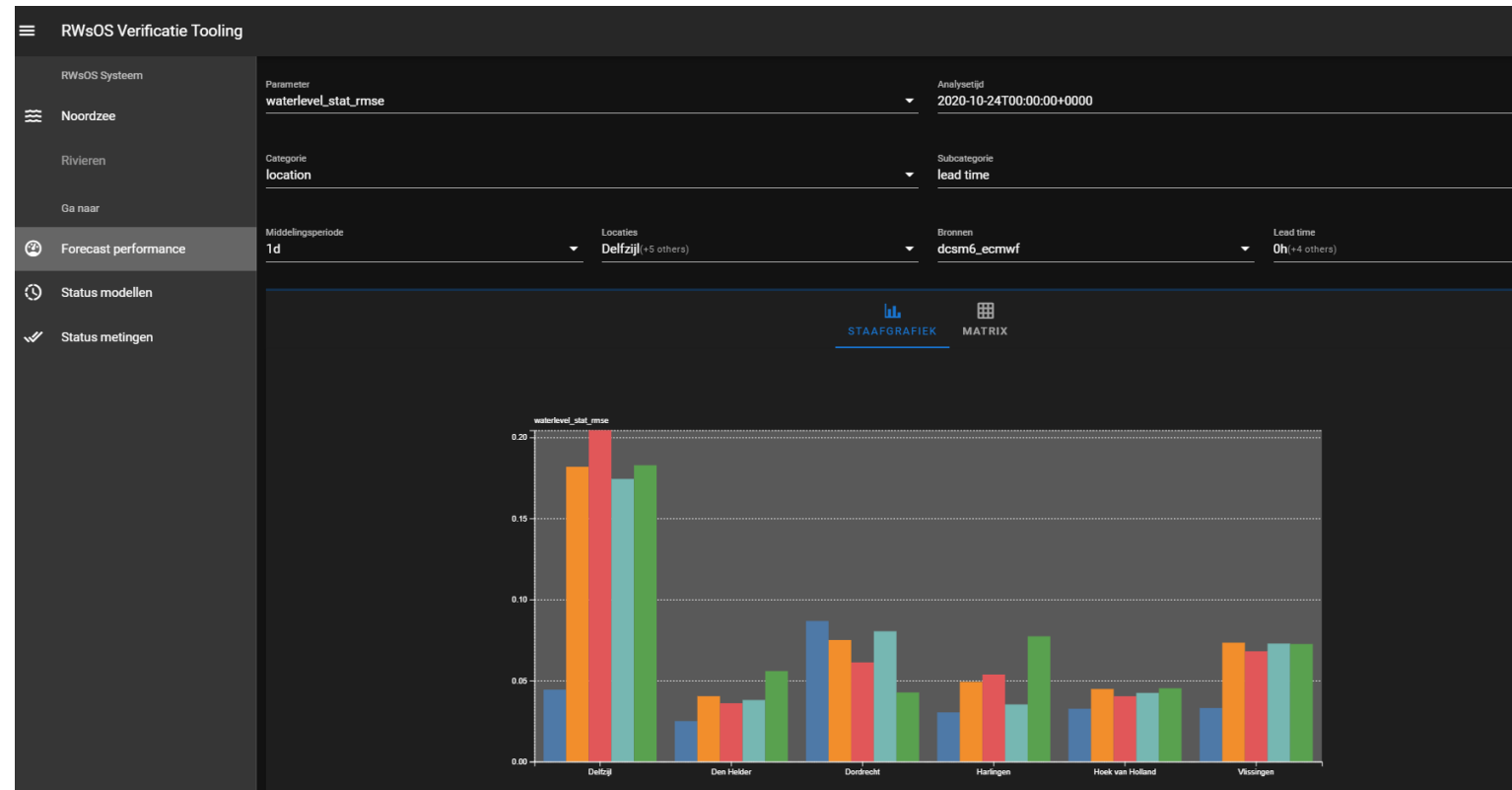
# HOW future automation to be investigated (5)





# HOW will it look like?

- Live demo
- Prototype





# Performance matrix

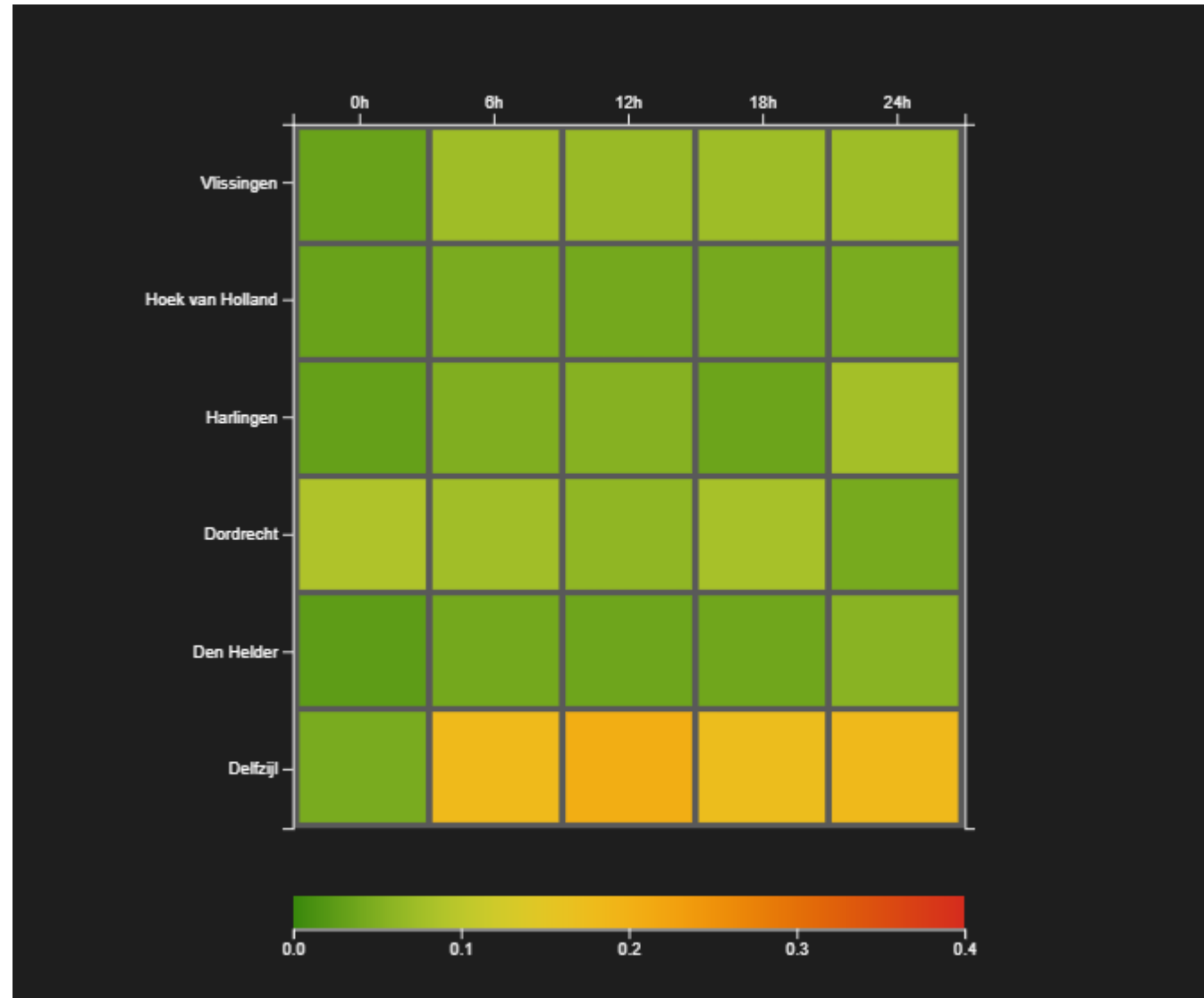


→ Lead time

Parameter RMSE  
shown in matrix for  
different locations/  
leadtimes and 1  
source

Axis and parameters  
flexible to choose by  
user

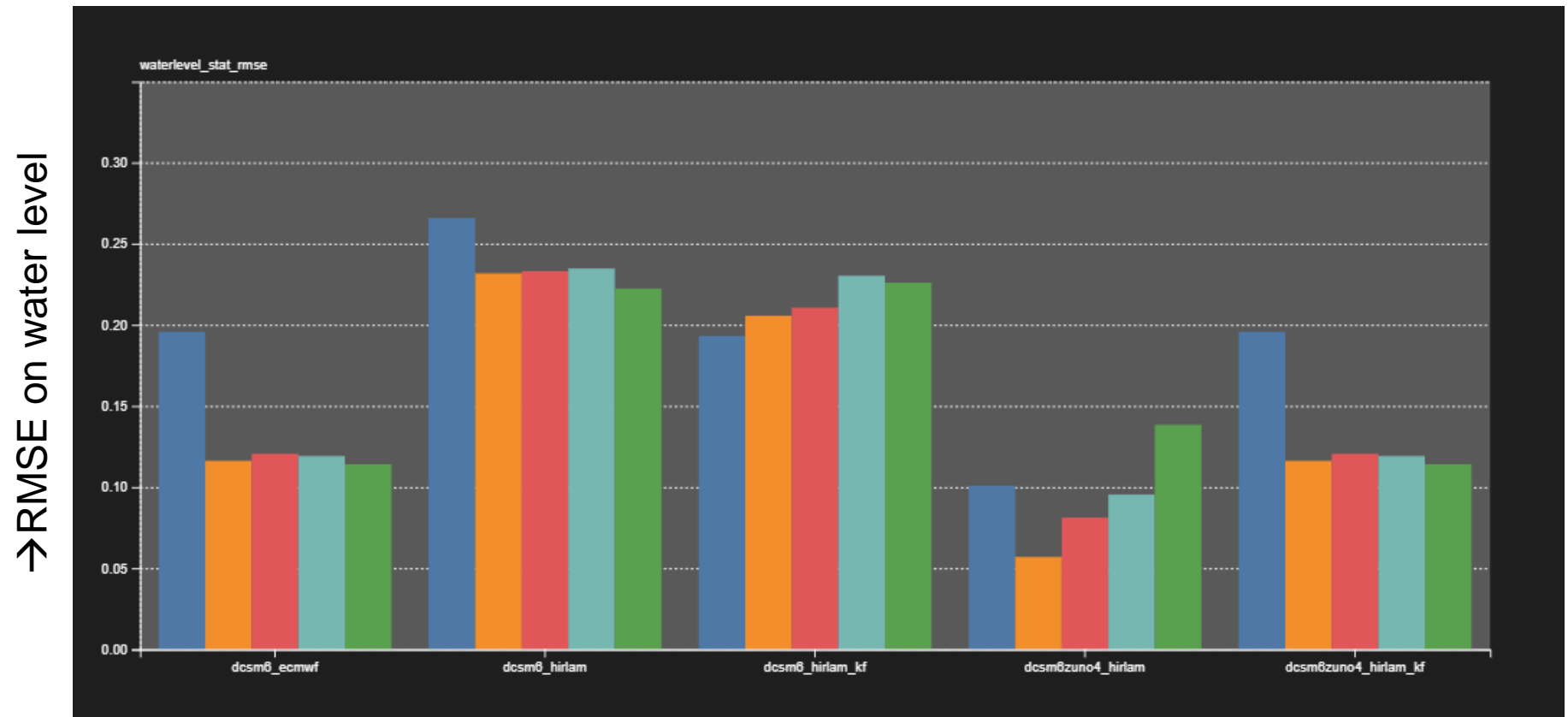
→ Locations



Deltares

Parameter RMSE shown in graphic for different models/ lead-time for 1 location

Axis and parameters flexible to choose by user



→ Models / leadtime



→Date

→Time

Analysedatum  
2020-10-30

Analysetijd  
02:00

**Status DCSMv6-Kf**

Status: vertraagd

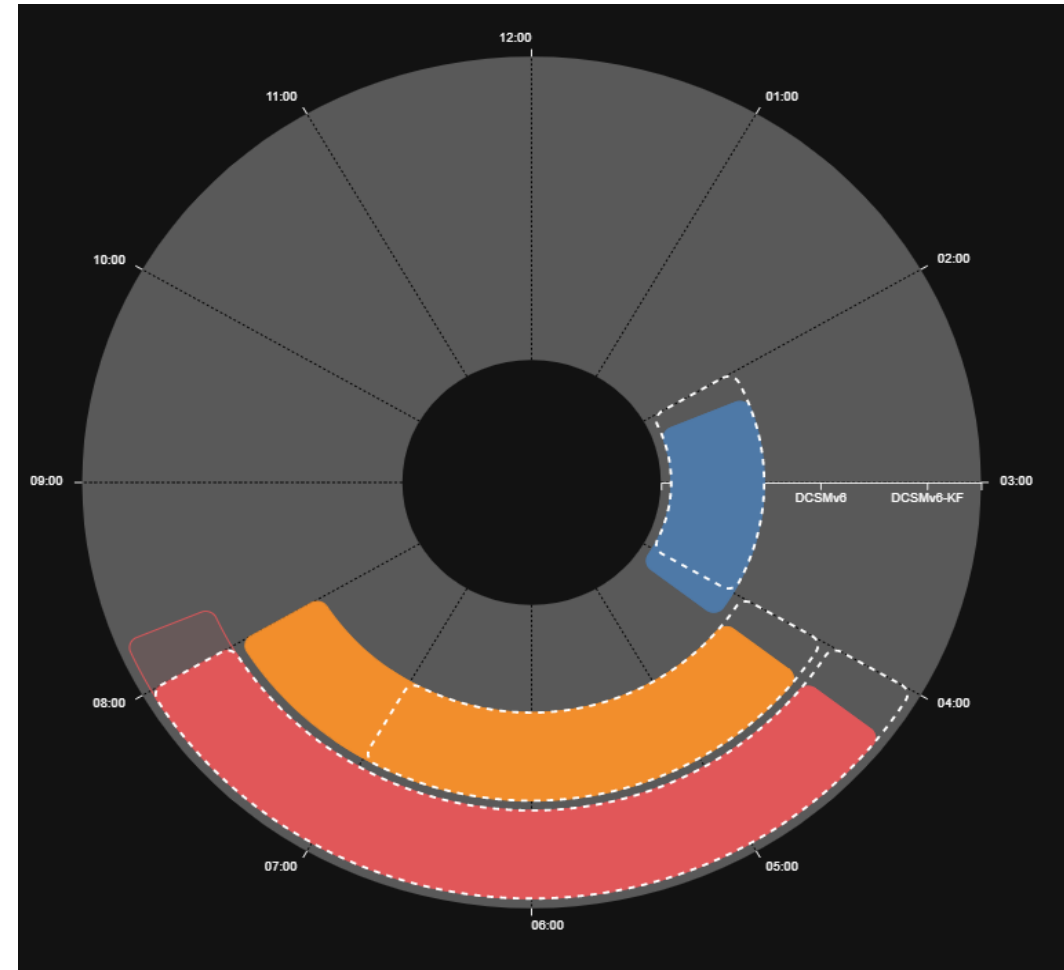
Start: 4:15

Uitgifte: verwacht om 8:15

Model runs delayed?

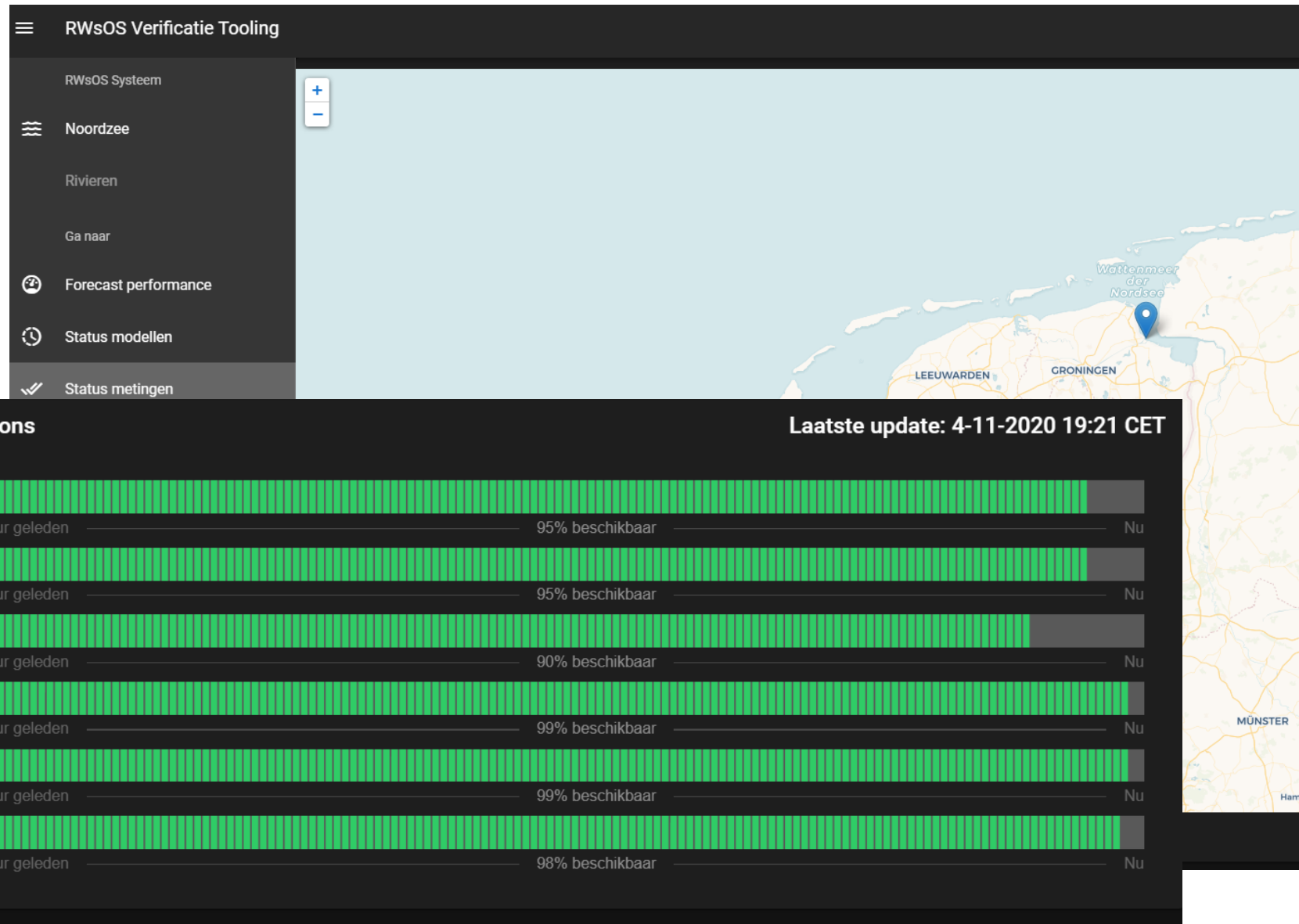
Can I wait for the next run  
before I will issue the  
warning?

→Model runs incl. meteo forcing



# Availability of observations for data assimilation

Observation are checked that are essential for data assimilation in the North Sea model





## Want to join?

- What are you doing with verifications and why?
- How could we help each other with this development?
- Any ideas about what we are missing?

We love to hear from you!



# contact



**Annette Zijderveld**  
Water Management Center of RWS

[Annette.zijderveld@rws.nl](mailto:Annette.zijderveld@rws.nl)



**Peter Gijsbers**  
Deltares

[Peter.gijsbers@deltares.nl](mailto:Peter.gijsbers@deltares.nl)

Please contact us if you  
want to have a live demo!