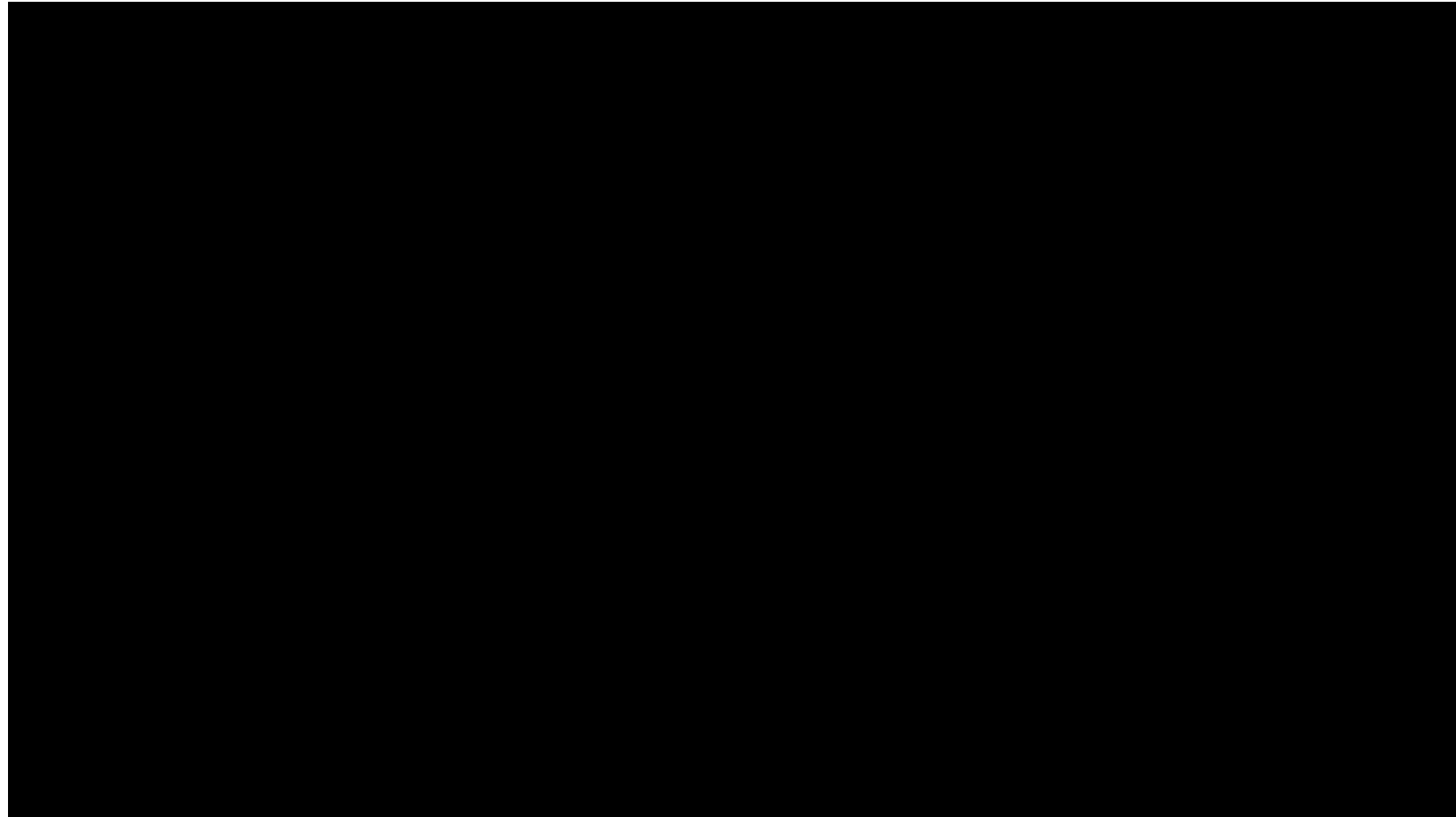


Community Water Watch

Your data, Your information, Your decision

9 November 2020

World Bank – Tanzania Urban Resilience Program



“We need better flood forecasting systems, to help people take action”

Community Water Watch

A co-designed flood early warning service, that uses and organises existing open online media communication channels, relies on innovative affordable and robust weather stations, and uses hydrological models, built on **open data and community collected map data and local knowledge**.

Affordable and sustainable sensors



Tailored information



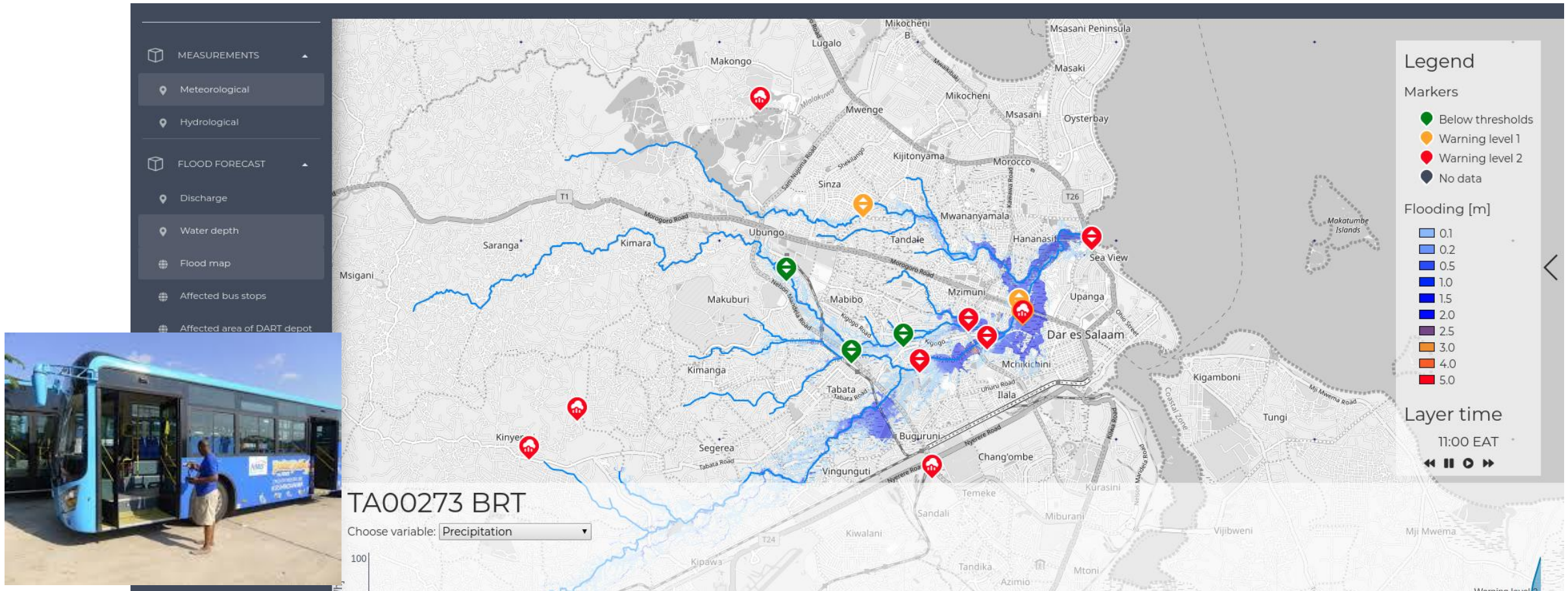
CWW dashboard

- Tailored to information and locations that are **meaningful** for end-users, to take actions that are relevant and realistic
- Enables end-users to **act** upon early warning & situational awareness at a local level
- Stimulates **collaboration** across multiple stakeholders. Stimulates self-organisation of stakeholders and communities

Emergency meeting during Dar Es Salaam floods in December 2019. Using Community Water Watch.



Testimonials



Eng. Kalugendo (Dar Rapid Transit Agency): “The dashboard is helping us to plan for the 70:30 busses distribution [70% of busses kept West of Kigogo bridge, and 30% East] in the system.”

FLOOD TAGS®



Social media updates during the event

Forecast Affected areas



Staff of the Tanzanian Red Cross discussing the information on the CWW dashboard.

"Measurements, forecasts, volunteer updates and online media data support decisions and fund requests."

At the Tanzanian Red Cross



Floods in Dar es Salaam, October 15th 2020

Authorities and Red Cross using the CWW dashboard for early warning & situational awareness. Includes flood reports from social media and active reporting by volunteers via the FloodTags chatbot. The CWW was developed by Deltares, Delft University, FloodTags and the Tanzanian Red Cross Society.



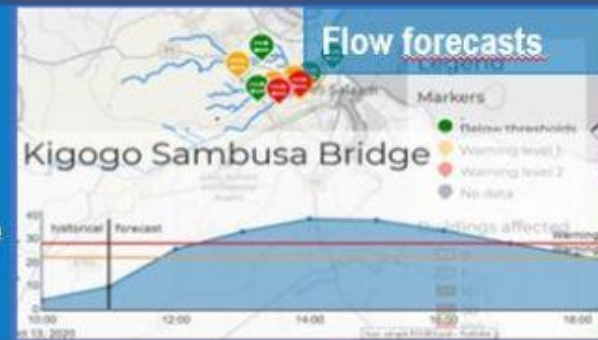
Heavy rains and floods in Dar es Salaam killed last Thursday. 107 houses were destroyed. 480 people displaced. While transportation and logistics heavily disrupted.

Online media & Volunteer reports provide situational awareness

"During the floods, online articles and social media posts are collected, filtered and displayed on the dashboard, providing a quick overview of the situation at that moment"

Detailed discharge measurements and forecasts for early action

"On the 15th of October, the river flow at the Kigogo Sambusa Bridge exceeded the second warning level with 40 m³/s"



Volunteers send updates of their situation via the FloodTags chatbot



Contact

- | | | | | | |
|---|--|---|--|---|---|
|  | www.deltares.nl |  | @deltares |  | linkedin.com/company/deltares |
|  | info@deltares.nl |  | @deltares |  | facebook.com/deltaresNL |

