

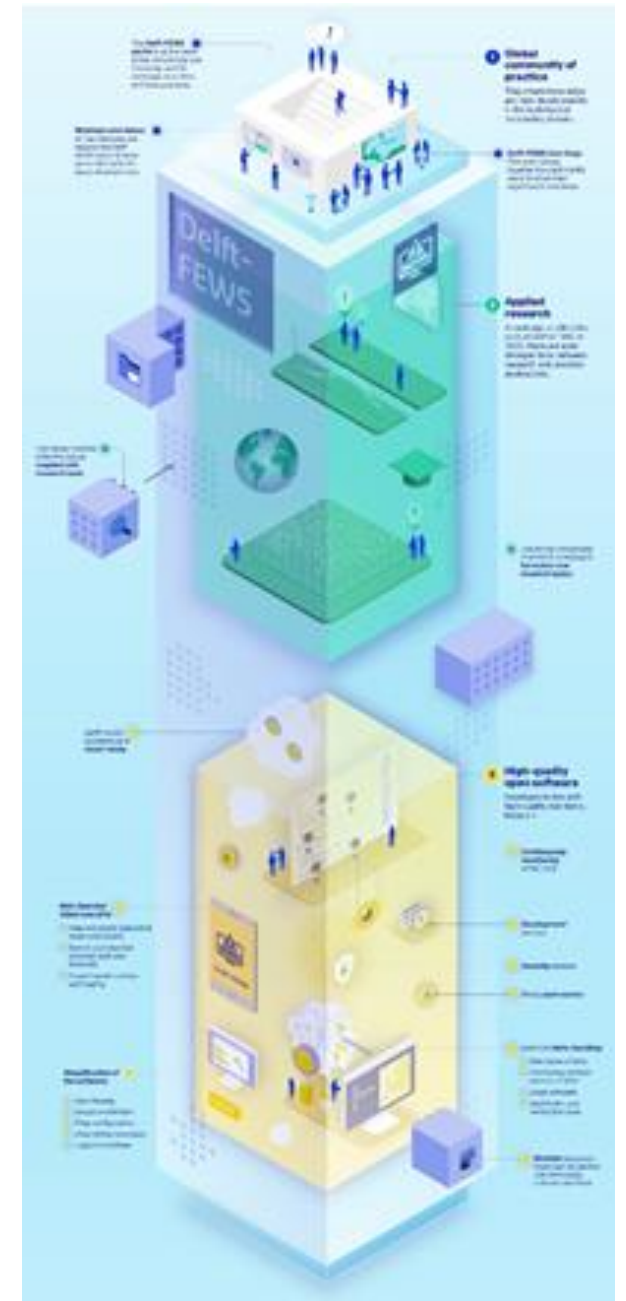
Delft-FEWS User Days

Roadmap 2022

Task 105:Code Clean-up plan

Delft-FEWS Code Clean-up

- Activity 105 of the Delft-FEWS Roadmap plan
- FEWS code cleanup contains the following topics
 - Remove old Delft-FEWS GUI modules that are not used anymore
 - Remove old Delft-FEWS Workflow modules that are not used anymore
 - Remove old Delft-FEWS System modules that are not used anymore
 - Make an overview of the functionality that will be removed from Delft-FEWS
 - Make a plan for the functionality that need to be included in 'newer' modules
 - Make a plan to inform the Delft-FEWS users that modules/functionality will be removed
 - Make a plan to update the WIKI documentation



Delft-FEWS Code Clean-up (plan of 2021)

The modules to be removed are split into 3 categories

- Unused modules that we are sure are not used anymore:
 - Can be deleted in 2021.01 FEWS version
- Doubtful modules that can still be used by FEWS users
 - Can be deleted in 2022.01
- Modules that are used by FEWS users and need to be replaced by new functionality
 - Can be deleted in 2023.01
- A list of all displays and modules with their expiry time need to be published on the WIKI
- In FEWS 2021.01 version a F12 function is required that logs if modules are used

Delft-FEWS WIKI

<https://publicwiki.deltares.nl/display/FEWSDOC/Delft-FEWS+End+of+Life+Modules+and+Displays>

The screenshot shows a web browser interface for the Delft-FEWS Wiki. The top navigation bar includes the Deltares logo, 'Spaces', a 'Nieuw' button, a search bar with 'Zoeken', and a 'Aanmelden' button. The left sidebar contains a 'Blog' link and a 'PAGINA-NAVIGATIESTRUCTUUR' section with a tree view of pages. The main content area shows the breadcrumb 'Pagina's / Home / Configuring Delft-FEWS - Configuration Guide' and the page title 'Delft-FEWS End of Life Modules and Displays'. Below the title is a 'Contents' section with a bulleted list of links. A red-bordered box contains a warning icon and text about migrating configurations. The 'Introduction' section follows, providing an overview of end-of-life modules and displays.

Pagina's / Home / Configuring Delft-FEWS - Configuration Guide

Delft-FEWS End of Life Modules and Displays

Contents

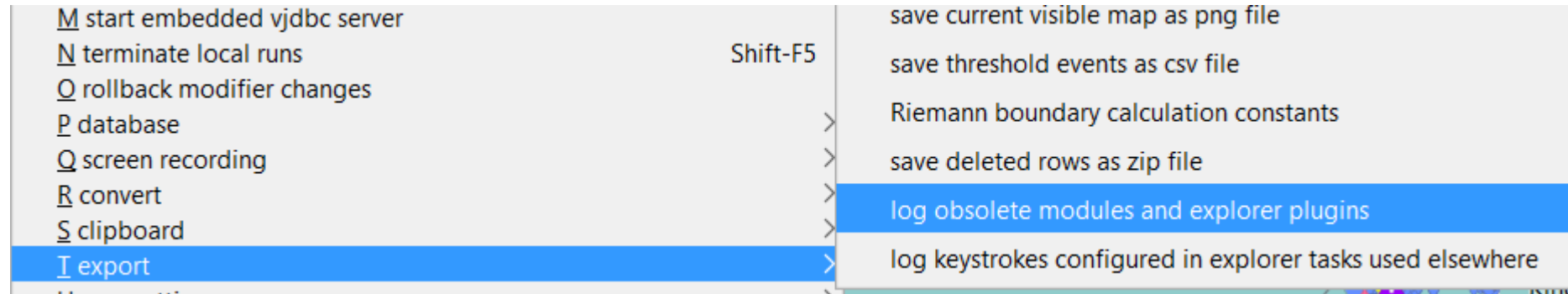
- Introduction
- FEWS Workflow Modules that will be removed
- FEWS Web Services APIs that will be removed
- FEWS Region and System descriptors that will be removed
- How to assess if your configuration contains end of life configuration
- Process for converting Delft-FEWS configuration
- Guidance for converting configuration

⚠ When migrating your configuration to 2021.01 and later, always run the Delft-FEWS 2021.01 and later `"F12->export->log obsolete modules and explorer plugins"` option.

Introduction

This page contains an overview of Delft-FEWS modules and displays flagged as end of life functionality. Most of these modules and displays are developed in the early stages of Delft-FEWS developments and replaced by new modules and Displays with similar functionality. Some modules are flagged as end of life because these are not used anymore by any customer; these will therefore not be replaced with a new module or display. The list of modules and displays that are end of life are listed below together with the process on how these modules and displays can be converted to the new modules. The selected end of life modules and displays will be removed from Delft-FEWS release 2021.01, 2021.02 and 2023.01. In the 2021.01 Delft-FEWS release there is functionality added that can be used to check if your Delft-FEWS application uses end of life functionality.

Delft-FEWS F12 button



How to assess if your configuration contains end of life configuration

In the Delft-FEWS 2021.01 and later a "F12->export->log obsolete modules and explorer plugins" option is added that can be used to check your configuration for modules and displays that are on the end of life list. This debug option can be started as follows:

1. Start your Delft-FEWS Stand Alone (or operator Client) application
2. Open the Maps display
3. Press F12 to start the Debug options
4. Select "T export"
5. Select "log obsolete modules and explorer plugins"

Delft-FEWS Displays - Plugins

List of Displays that are or will be removed from the Delft-FEWS software

Module	FEWS Class	FEWS Version	Note	WIKI
KFlows Display	nl.wldelft.fews.gui.plugin.objectiveanalyzer.ObjectiveAnalyzerDisplay	2021.01	Replaced by new KFlows display plugin	31. KFlows Display
PRTF display	nl.wldelft.fews.gui.plugin.prtf.PrtfDialog	2021.01	Not used anymore, will be removed	PRTF Display
Trends display	nl.wldelft.fews.gui.plugin.trend.TrendDisplay	2021.01	Not used anymore, will be removed	Trends Display
Longitudinal display	nl.wldelft.fews.gui.plugin.longitudinaldisplay.LongitudinalDisplayDialog	2021.01	Replaced by Time Series Display	Display Groups
Old Archive display	nl.wldelft.fews.gui.plugin.taskRunDialog.TaskRunDialogFewsExplorerPlugin	2017.02	This is a general display plugin in combination with archiveTask element	Archive Display
2nd map display	nl.wldelft.fews.gui.plugin.map.MapDisplay	2021.01	Not used anymore, will be removed. The default Map display in Delft-FEWS will not be removed, only the second map display.	
Lookup Display	nl.wldelft.fews.gui.plugin.lookupscenario.LookUpWhatIfScenarioDialog	2021.01	Not used anymore, will be removed	
What-If Display	nl.wldelft.fews.gui.plugin.scenario.WhatIfScenarioDialog	2023.01	Will be replaced by new What-If functionality in combination with modifiers. More information will follow.	What-If Display

Delft-FEWS Modules

List of (Workflow) Modules that are or will be removed from the Delft-FEWS software

Module	FEWS Class	FEWS Version	Note	WIKI
EA Import	nl.wldelft.fews.system.plugin.dataImport.EaImport	2021.01	Replaced by Time Series Import	EA Import
EA Export	nl.wldelft.fews.system.plugin.dataExport.EaExport	2021.01	Replaced by Time Series Export	EA Export
Old Archive Forecast	nl.wldelft.fews.system.plugin.archive.ForecastArchiver	2017.02	Replaced by new open Archive Module	Archive
Old Archive Time Series	nl.wldelft.fews.system.plugin.archive.TimeSeriesArchiver	2017.02	Replaced by new open Archive Module	Archive
Old Archive Thresholds	nl.wldelft.fews.system.plugin.archive.ThresholdEventsArchiver	2017.02	Replaced by new open Archive Module	Archive
Old Archive Configuration	nl.wldelft.fews.system.plugin.archive.ConfigurationArchiver	2017.02	Replaced by new open Archive Module	Archive
Rolling Barrel	nl.wldelft.fews.system.plugin.rollingbarrel.RollingBarrelModule	2021.01	Rolling barrel not required anymore on client-server system. For SA, add to Explorer Tasks	Rolling Barrel
RDBMS Export				
Amalgamate	nl.wldelft.fews.system.plugin.amalgamate.AmalgamateModule	2021.01	Replaced by Import amalgamate module	Amalgamate
Old Transformation Module	nl.wldelft.fews.system.plugin.transformation.TransformationController	2023.01	Most functions replaced by new Transformation module. Contact Deltares if you have issues converting the config	Transformation
Interpolation Module	nl.wldelft.fews.system.plugin.interpolation.InterpolationController	2023.01	Most functions replaced by new Transformation module. Contact Deltares if you have issues converting the config	Transformation
Lookup Module	nl.wldelft.fews.system.plugin.lookup.LookUpController	2023.01	Most functions replaced by new Transformation module. Contact Deltares if you have issues converting the config	Transformation
Correlation Module	nl.wldelft.fews.system.plugin.correlation.correlationController	2023.01	Most functions replaced by new Transformation module. Contact Deltares if you have issues converting the config	Transformation
Performance Indicator Module	nl.wldelft.fews.system.plugin.performanceindicator.PerformanceIndicatorController	2024.01	Most functions replaced by new Transformation module. Contact Deltares if you have issues converting the config	Transformation
Threshold Event	nl.wldelft.fews.system.plugin.threshold.ThresholdEventCrossingModule	2013.02	This module is replaced by a predefinedActivity	Thresholds

Delft-FEWS Region and System descriptors

List of Descriptors, not used anymore in recent Delft-FEWS versions

Descriptor	Config Folder	FEWS Version	Note	WIKI
Correlation Events Descriptors	RegionConfigFiles	2018.01	Not required anymore, delete from config folder	Correlation Events
Display Descriptors	SystemConfigFiles	2018.01	Not required anymore, delete from config folder	Display
Display Instance Descriptors	SystemConfigFiles	2018.01	Not required anymore, delete from config folder	Display Instance
Flag Conversion Descriptors	RegionConfigFiles	2018.01	Not required anymore, delete from config folder	Flag Conversion
ID Mapping Descriptors	RegionConfigFiles	2018.01	Not required anymore, delete from config folder	ID Map
Module Descriptors	SystemConfigFiles	2018.01	Not required anymore, delete from config folder	Module
TravelTime Descriptors	RegionConfigFiles	2018.01	Not required anymore, delete from config folder	Travel Times
Unit Conversion Descriptors	RegionConfigFiles	2018.01	Not required anymore, delete from config folder	Unit Conversion
Log4jConfig.xml	Root	2018.02	Not required anymore, is included in Delft-FEWS binaries	Logging

Delft-FEWS Cleanup-plan

Status of the End of Live modules

- In Delft-FEWS 2021 – 2022 Releases the End Of Live modules are logged
- Documentation of EOL modules is provided on the WIKI
- We received log files from some Users and checked many configs from systems we have a S&M contract for
- Most systems are up-to date, EOL modules not used anymore

Challenges!

- New What-if functionality is developed, but not 100% complete in 2022.02 Delft-FEWS release
 - (Old) What-If can only be used with (old) Transformation module
 - EOL of What-If and Transformations will be extended to 2024.01
 - More training and guidance needed for Delft-FEWS configurators (users) to migrate this functionality
- Performance Indicator module is not yet available in new Transformation module
 - EOL of Performance Indicator module will be extended to 2024.01

Delft-FEWS EOI Feedback

- Did you already check your Delft-FEWS system(s) on EOI functionality
- Was the information provided useful?
- Do you miss some information from Deltares?
- Do you miss logging information to clean-up your config?

- Are you interested in configuration migration training?
 - Use of templates
 - Migrate standard functions from EOL modules to Transformations
 - Use of new What-If module